

Identifying the export procedures/requirements for the exports from Bangladesh to the selected destination

[Package no. BRCP-1/MOC/SD-17]

Submitted to

Bangladesh Regional Connectivity Project-1
WTO cell, Ministry of Commerce
Level-12 (Westside), Probashi Kallyan Bhaban,
71-72 Old Elephant Road, Dhaka 1000

Contributors

Dr. Selim Raihan¹

Recardo Saurav Antor Halder²

Halima Binte Islam³

Submitted on

10 November 2021

Revised: 18 May 2022

¹ Executive Director SANEM, and Professor Department of Economics, University of Dhaka

² Senior Research Associate, SANEM

³ Intern, SANEM

Table of Contents

1. Introduction	5
1.1 Background	5
1.2 Objective and scope	5
1.3 Methodology	6
2. Bilateral trade scenario between Bangladesh and the ten partner countries	6
2.1 Pattern of Bangladesh’s export to the selected destinations	7
2.2 MFN and applied tariffs imposed on the exports from Bangladesh to the selected destinations	12
2.3 Identifying SPS measures for agro-exports in the selected countries	16
2.4 Identifying the NTMs/ NTBs in the selected countries	28
3. Country-wise comprehensive flow chart of the general export procedure from Bangladesh to the selected destinations	70
4. Market demand analysis for diversified Bangladeshi products having export potentials	74
4.1 Export potential of current exporting items	74
4.2 Potential new exporting commodities from Bangladesh to the selected destinations	80
5. Conclusion	85
Bibliography	86

List of tables

Table 1: Preference and market access of the exports from Bangladesh to the selected destinations ...	6
Table 2: Top ten export items of Bangladesh in the selected destinations and percentage share of the top ten items to the total export of Bangladesh to the selected destination (HS 2 digit)	9
Table 3: Top ten export items of Bangladesh to the selected destinations and percentage share of the top ten items to the total export from Bangladesh to the selected destination (HS 6 digit).....	10
Table 4: Percentage of preference enjoyed by the Bangladeshi exports in the selected destinations at HS- 6 digit level.....	12
Table 5: Average minimum tariff (percentage) applied to the exports from Bangladesh to the selected destinations (HS- 2 digit).....	13
Table 6: The description of the SPS measures as per the NTM codes.....	16
Table 7: SPS measures faced by the agro exports of Bangladesh to the selected destinations.....	22
Table 8: The description of each of the NTM codes that Bangladeshi exports face/ might face in the selected destinations for HS chapter 1 to 97	28
Table 9: NTMs faced by the exports from Bangladesh at the selected destinations	42
Table 10: The export potential of Bangladesh’s current export commodities to Brazil (top ten items)	75
Table 11: The export potential of Bangladesh’s current export commodities to China (top ten items)	75
Table 12: The export potential of Bangladesh’s current export commodities to France (top ten items)	76
Table 13: The export potential of Bangladesh’s current export commodities to Germany (top ten items).....	77
Table 14: The export potential of Bangladesh’s current export commodities to India (top ten items) .	77
Table 15: The export potential of Bangladesh’s current export commodities to Italy (top ten items) ..	78
Table 16: The export potential of Bangladesh’s current export commodities to Japan (top ten items)	78
Table 17: The export potential of Bangladesh’s current export commodities to Spain (top ten items)	79
Table 18: The export potential of Bangladesh’s current export commodities to the UK (top ten items)	79
Table 19: The export potential of Bangladesh’s current export commodities to the USA (top ten items)	80
Table 20: Potential new items that Bangladesh can export to Brazil.....	80
Table 21: Potential new items that Bangladesh can export to China	81
Table 22: Potential new items that Bangladesh can export to France.....	81
Table 23: Potential new items that Bangladesh can export to Germany	82
Table 24: Potential new items that Bangladesh can export to India	82
Table 25: Potential new items that Bangladesh can export to Italy	83
Table 26: Potential new items that Bangladesh can export to Spain.....	83
Table 27: Potential new items that Bangladesh can export to Japan	84
Table 28: Potential new items that Bangladesh can export to the UK	84
Table 29: Potential new items that Bangladesh can export to the USA	85

List of figures

Figure 1: Total export from Bangladesh to the selected destinations (2011-2020)	7
<i>Figure 2: The percentage share of the total export from Bangladesh to the selected destinations (2011-2020)</i>	8
Figure 3: Flow chart of export procedures for exporting to Japan.....	71
Figure 4: Flow chart of export procedures for exporting to the USA.....	71
Figure 5: Flow chart of export procedures for exporting to the UK.....	72
Figure 6: Flow chart of export procedures for exporting to China.....	72
Figure 7: Flow chart of export procedures for exporting to Brazil	73
Figure 8: Flow chart of export procedures for exporting to India	73
Figure 9: Flow chart of export procedures for exporting to the EU (Germany, Spain, Italy, France)	74

1. Introduction

1.1 Background

The Bangladesh Trade Portal (BTP) is an official website established by the Ministry of Commerce (MoC) where all the regulatory information regarding export and import procedure is available. The BTP serves as a one-stop point for trade-related information dissemination. Improving predictability and transparency of the country's existing trade laws and processes is the preliminary goal of this website. Traders wishing to export from and import into Bangladesh can get all the necessary information from the BTP. The government's commitment in the 7th Five Year Plans to accelerate economic growth and the country's compliance with the World Trade Organisation's (WTO's) Trade Facilitation Agreement (TFA) article one is reflected by the BTP. Information related to tariffs, special measures, permit applications, licenses, and customs clearance processes is comprehensively chalked in the BTP.

Against this backdrop, this study aims to contribute to and complement the BTP by analysing the legal and customs clearance-related requirements for Bangladeshi exports to some selected destinations including countries of Europe, North America, South America, and Asia. The study will provide a comprehensive flowchart on how to export products from Bangladesh to the selected destinations. This study will also provide a complete summary of the applied tariff structures for the exports from Bangladesh to the selected destinations, the Sanitary and Phyto-Sanitary (SPS) requirements, Non-Tariff Measures (NTMs) faced in the destination countries, and a projection of the export potentials of the existing and new products to the selected destination.

1.2 Objective and scope

The broad objective of the study is to identify the regulatory requirements imposed by the border clearance agencies in the major and potential export destinations. A special focus will be given to the analysis of the tariff structures, SPS measures, and additional market access information. This study will also chalk out a flow chart regarding the general export procedures in the selected destinations. The findings of this study will be published in the Bangladesh Trade Portal to enhance the exporters with potential information and export requirements while exporting to these destinations.

The scope of the study is limited to the selected 10 export destinations, namely, Brazil, China, India, France, Germany, Italy, Japan, Spain, the United Kingdom, and the United States of America.

Under this scope the broad objective, the study will,

- Identify the specific provisions of the border clearance agencies required for the local traders to conduct export in the selected destinations.
- Identify the tariff structure applicable for Bangladesh's export in the selected destinations.

- Identify the SPS measures in the selected destinations that Bangladesh’s agro-export faces.
- Identify the NTMs/NTBs that Bangladesh’s export face in the selected export destinations.
- Develop a country-wise flowchart about the procedure to export from Bangladesh to the selected destinations.
- Analyse the market demand for diversified products from Bangladesh having export potentials.

1.3 Methodology

This study uses a mixed methodology to conduct the stated tasks. Rigorous desk research and Key informant interviews (KIIs) were done to carry out the tasks and achieve the intended objective of this study.

For the **desk research**, the following documents and secondary data sets were vital.

- ITC trade map data set
- UN Comtrade data set
- ITC market access map
- ITC export potential map
- Documents and websites of the customs authorities of the selected destinations
- UNCTAD TRAINS NTM data set

For the key informant interviews (KIIs) the following two exporters (One from RMG and the other from the leather and leather footwear sector) were communicated to chalk out the details of the export flow chart to the selected destinations.

2. Bilateral trade scenario between Bangladesh and the ten partner countries

Before diving into the analysis, it is imperative to summarise the market preference structure of the products of Bangladesh in the selected destinations. Table 1, summarises the existence of preferential market access, if any, for the exported items from Bangladesh to the selected destinations.

Table 1: Preference and market access of the exports from Bangladesh to the selected destinations

Country	Preference and market access of Bangladesh
EU (Italy, Germany, France, Spain)	As an LDC, Bangladesh enjoys the most favourable regime of the EU GSP, which is the everything But Arms (EBA) scheme. Under this scheme, Bangladesh enjoys duty-free quota-free market access for all products except arms and ammunition ⁴ .

⁴ [Bangladesh - Trade - European Commission \(europa.eu\)](http://europa.eu)

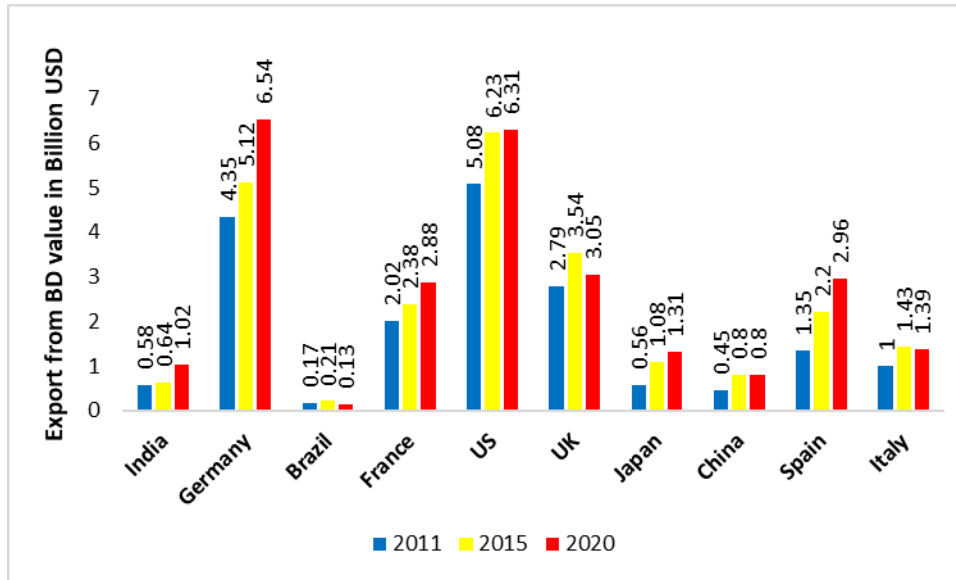
Country	Preference and market access of Bangladesh
United Kingdom	Post-Brexit, Bangladesh like other LDCs, enjoys the same preference as the EBA schemes that the LDCs were receiving when the UK was in the EU. Under the same scheme, Bangladesh enjoys duty-free quota-free market access for all products except arms ⁵ .
China	97% of the products of Bangladesh are receiving tariff exemption. A total of 8256 product receives zero tariffs in the Chinese market ⁶ .
USA	Bangladesh does not receive any forms of GSP in the USA market since June 2013 ⁷ .
India	As an LDC Bangladesh receives preferential market access from India ⁸ .
Japan	Japan provides preferential market access to the exports from Bangladesh as an LDC ⁹ .
Brazil	There are no preferential trading arrangements between Bangladesh and Brazil ¹⁰ .

2.1 Pattern of Bangladesh’s export to the selected destinations

Figure 1 and 2 shows the total exports from Bangladesh to the selected destinations from 2011 to 2020. Among the selected destinations, Bangladesh's export is more prominent in the United States, Germany, France, Spain, and the United Kingdom.

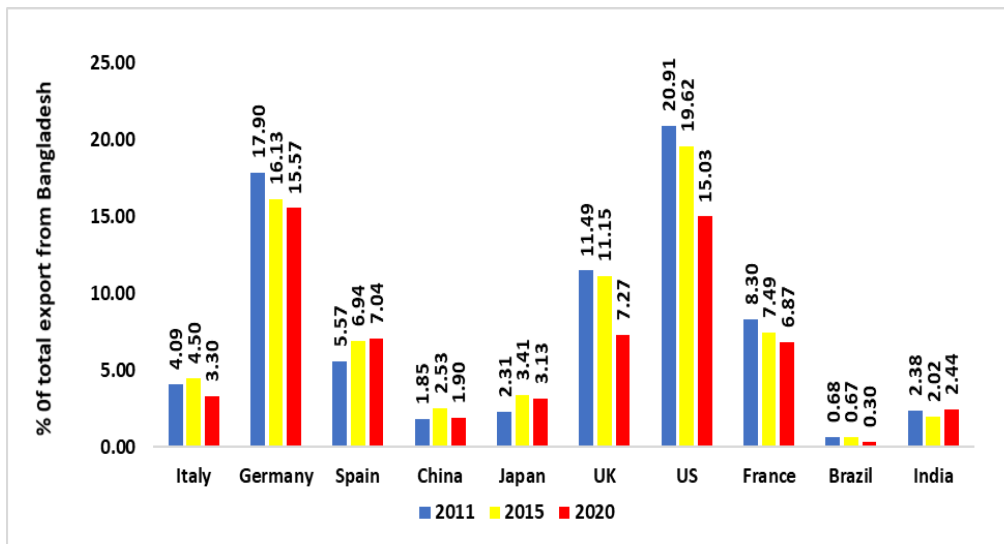
Figure 1: Total export from Bangladesh to the selected destinations (2011-2020)

⁵ [No tariff for Bangladesh post-Brexit: UK govt | The Daily Star](#)
⁶ [China-Bangladesh Trade: New Prospects Opening Up for Bangladesh - DATABD.CO](#)
⁷ [Bilateral Economic Relations - U.S. Embassy in Bangladesh \(usembassy.gov\)](#)
⁸ ITC trade map
⁹ ITC trade map
¹⁰ [Bangladesh-Brazil to sign FTA for enhancing bilateral trade \(textiletoday.com.bd\)](#)



Source: ITC

Figure 2: The percentage share of the total export from Bangladesh to the selected destinations (2011-2020)



Source: ITC

Table 2 illustrates Bangladesh’s top ten export items to the selected destinations and their percentage share to the total exports from Bangladesh to that particular destination. From the table, it is evident that Bangladesh does not export a lot of items to these destinations. Bangladesh has a narrow export basket. Mostly, the top ten items exported from Bangladesh to these selected destinations comprise more than 90 percent share of the total export from Bangladesh to these selected destinations.

Table 2: Top ten export items of Bangladesh in the selected destinations and percentage share of the top ten items to the total export of Bangladesh to the selected destination (HS 2 digit)

Country	Top ten exporting items from Bangladesh	Product name	% share of top ten exports to the total exports from Bangladesh
China	62,61, 53, 41,03,42,64,52,67, 90	RMG, Yarn (fibre), Fish, Raw hide, Articles of leather, Cotton, Optical and medical instruments, Footwear	87
India	62,15,53,61,63,89, 03,52,88,72	RMG, Yarn (fibre), Fish, Cotton, Optical and medical instruments, Animal/vegetable fat, Iron and steel, Parts of aircraft/spacecraft	74
France	61,62,64,63,03,42, 94,95,65,39	RMG, Footwear, Fish, Articles of leather, Furniture, Toy, Headgear, Plastic	99.45
Brazil	61,62,53,42,64,39, 63,65,46,52	RMG, Yarn, Articles of leather, Footwear, Plastic, Headgear, Cotton	99.68
Germany	61,62,64,63,03,87, 42,65,99,39	RMG, Footwear, Fish, Articles of leather, Headgear, Plastic, Vechicles (other than railway)	99.21
US	62,61,63,65,64,67, 42,99,03,94	RMG, Headgear, Footwear, Fish, Prepared feathers human hair and articles of therof, Articles of leather, Furniture	97.48
UK	61,62,63,03,87,64, 19,53,07,65	RMG, Fish, Footwear, Headgear, Vechicles (other than railway), Yarns, Preps of cereal, Edible vegetables	98.8
Japan	62,61,42,63,64,9,0 3,85,56,84	RMG, Articles of leather, Footwear, Fish, Coffee, Speacial yarns, Nuclear reactors, electric machineries	94.99

Country	Top ten exporting items from Bangladesh	Product name	% share of top ten exports to the total exports from Bangladesh
Spain	61,62,64,63,95,41,74,94,53,65	RMG, Footwear, Raw hide, Cotton, Headgear, Furniture, Toy, Copper articles	99.35
Italy	61,62,64,63,41,69,95,24,42,03	RMG, Footwear, Articles of leather, Raw hide, Fish, Ceramic products, Toy	98.99

Source ITC (2020)

It is also important to note that at HS- 6 digit level Bangladesh's export basket to the selected destinations is very narrow. Table 3, shows the top then export items (in values) exported to the selected destinations from Bangladesh and their corresponding share to the total exports from Bangladesh. It is evident that the top ten products in HS-6 digit, comprise almost or more than 50 percent of the total export (in values) from Bangladesh. Table 3 is a reflection of the magnitude of export concentration of Bangladesh to these selected destinations.

Table 3: Top ten export items of Bangladesh to the selected destinations and percentage share of the top ten items to the total export from Bangladesh to the selected destination (HS 6 digit)

Country	Top ten exporting items from Bangladesh	Product name	% share of top ten exports to the total exports from Bangladesh
China	530710, 610910, 620342, 620462, 620193, 410441, 611020, 420221, 030633, 530720	Textile fibre, RMG (Knit and Woven), Raw hide, Articles of leather	47.72
India	151590, 631010, 620342, 531010, 620520, 530310, 630510, 530720, 880240, 890120	Textile fibre, RMG (Knit and Woven), Vegetable oil, Aircraft/space craft parts, Parts of Boats	42.5
France	610910, 620342, 611020, 611030, 620462, 610462, 620520, 610510, 611120, 610990	RMG (Knit and Woven)	63.36

Country	Top ten exporting items from Bangladesh	Product name	% share of top ten exports to the total exports from Bangladesh
Brazil	611030, 620342, 620520, 610910, 611020, 530310, 610620, 620462, 610510, 620590	RMG (Knit and Woven), Textile fibre,	66.08
Germany	610910, 620342, 611020, 611030, 620462, 610462, 620520, 610510, 611120, 610990	RMG (Knit and Woven)	61.78
USA	610910, 620342, 611020, 611030, 620462, 621210, 620343, 650500, 630622	RMG (Knit and Woven)	57.19
UK	610910, 620342, 611020, 611030, 620462, 610462, 620520, 610711, 621210, 620343	RMG (Knit and Woven)	55.08
Japan	620342, 610910, 611020, 620462, 611030, 610990, 620520, 610610, 640399, 620343	RMG (Knit and Woven), Footwear	56.82
Spain	610910, 620342, 611020, 611030, 620462, 610462, 620520, 610510, 611120, 610990	RMG (Knit and Woven)	64.07
Italy	610910, 620342, 611020, 611030, 620462, 610462, 620520, 610510, 611120, 610342	RMG (Knit and Woven)	69.09

Source: ITC (2020)

2.2 MFN and applied tariffs imposed on the exports from Bangladesh to the selected destinations

Table 4 shows the percentage of tariff preference enjoyed by Bangladesh's export to the selected destinations at the 6-digit HS code level. As an LDC, Bangladesh receives tariff preference in almost all the selected destinations except for the USA and Brazil.

Table 4: Percentage of preference enjoyed by the Bangladeshi exports in the selected destinations at HS- 6 digit level

Country	% of Preference enjoyed by Bangladeshi exports	Remarks
India	99.81	A. 10 products of 5387 products in HS6 digit, do not receive any form of preference. A total of 5377 products in HS6 receive preference.
		B. Out of 5377 products in HS6 digit that receives preference, 59 products have preferential tariff rate, however, not zero.
USA	0	A. Out of 5387 products in HS6 digit Bangladesh receives no preference.
UK	99.74	A. 14 products of 5387 products in HS6 digit, do not receive any form of preference. A total of 5373 products in HS6 receive preference.
		B. Out of 5373 products in HS6 digit that receives preference, 3 products have preferential tariff rate, however, not zero.
France	99.74	A. 14 products of 5387 products in HS6 digit, do not receive any form of preference. A total of 5373 products in HS6 receive preference.
		B. Out of 5373 products in HS6 digit that receives preference, 3 products have preferential tariff rate, however, not zero.
Brazil	1.01	A. Bangladesh gets 1.01 percent preference from Brazil B. 54 of the total of 5387 products at HS6 receives preference in the Brazil market
Germany	99.74	A. 14 products of 5387 products in HS6 digit, do not receive any form of preference. A total of 5373 products in HS6 receive preference.
		B. Out of 5373 products in HS6 digit that receives preference, 3 products have preferential tariff rate, however, not zero.

Country	% of Preference enjoyed by Bangladeshi exports	Remarks
Japan	99.05	A. 51 products of 5386 products in HS6 digit, do not receive any form of preference. A total of 5335 products in HS6 receive preference.
		B. Out of 5335 products in HS6 digit that receives preference, 60 products receive preferences that are not zero.
China	100	A. All 5387 products in HS6 digit receive of preference.
		B. Out of 5387 products in HS6 digit that receives preference, 2 products have preferential tariff rate, however, not zero.
Spain	99.74	A. 14 products of 5387 products in HS6 digit, do not receive any form of preference. A total of 5373 products in HS6 receive preference.
		B. Out of 5373 products in HS6 digit that receives preference, 3 products have preferential tariff rate, however, not zero.
Italy	99.74	A. 14 products of 5387 products in HS6 digit, do not receive any form of preference. A total of 5373 products in HS6 receive preference.
		B. Out of 5373 products in HS6 digit that receives preference, 3 products have preferential tariff rate, however, not zero.

Source: Author's calculation from the ITC market access map

Table 5 shows the minimum average tariff rates applied to the exports from Bangladesh to the selected destinations at the 2-digit HS code.

Table 5: Average minimum tariff (percentage) applied to the exports from Bangladesh to the selected destinations (HS- 2 digit)

HS Code	Germany	France	Italy	Spain	UK	China	India	USA	Japan	Brazil
01	0.00	0.00	0.00	0.00	0.00	0.00	0.00	0.64	0.00	1.56
02	0.00	0.00	0.00	0.00	0.00	0.00	0.00	4.58	0.00	10.48
03	0.00	0.00	0.00	0.00	0.00	0.00	1.40	0.25	1.52	9.76
04	0.00	0.00	0.00	0.00	0.00	0.00	0.00	17.43	0.00	21.28
05	0.00	0.00	0.00	0.00	0.00	0.00	0.00	0.23	0.00	5.25
06	0.00	0.00	0.00	0.00	0.00	0.00	0.00	3.67	0.00	2.94
07	0.00	0.00	0.00	0.00	0.00	0.00	0.00	5.00	0.00	8.85
08	0.00	0.00	0.00	0.00	0.00	0.00	0.00	2.01	0.00	10.33
09	0.00	0.00	0.00	0.00	0.00	0.00	0.00	0.11	0.00	9.56
10	0.00	0.00	0.00	0.00	0.00	0.00	0.00	1.45	42.69	6.45
11	0.00	0.00	0.00	0.00	0.00	0.00	0.61	1.61	27.36	12.44

HS Code	Germany	France	Italy	Spain	UK	China	India	USA	Japan	Brazil
12	0.00	0.00	0.00	0.00	0.00	0.00	0.00	1.48	0.07	3.91
13	0.00	0.00	0.00	0.00	0.00	0.00	2.08	1.07	0.00	7.32
14	0.00	0.00	0.00	0.00	0.00	0.00	0.00	0.59	0.00	6.00
15	0.00	0.00	0.00	0.00	0.00	0.00	0.00	3.38	0.00	9.67
16	0.00	0.00	0.00	0.00	0.00	0.00	0.00	5.03	0.00	16.49
17	0.00	0.00	0.00	0.00	0.00	0.00	0.00	12.77	9.81	17.17
18	0.00	0.00	0.00	0.00	0.00	0.00	0.00	4.66	0.00	16.56
19	0.00	0.00	0.00	0.00	0.00	0.00	0.00	5.20	1.42	16.92
20	0.00	0.00	0.00	0.00	0.00	0.00	0.00	7.87	0.02	15.12
21	0.00	0.00	0.00	0.00	0.00	0.00	0.00	8.71	0.00	15.81
22	0.65	0.65	0.65	0.65	0.65	0.00	115.42	1.39	0.00	20.43
23	0.00	0.00	0.00	0.00	0.00	0.00	0.00	2.93	0.00	6.77
24	0.00	0.00	0.00	0.00	0.00	0.00	32.26	29.63	0.00	16.44
25	0.00	0.00	0.00	0.00	0.00	0.00	0.00	0.18	0.00	2.51
26	0.00	0.00	0.00	0.00	0.00	0.00	0.00	0.00	0.00	2.19
27	0.00	0.00	0.00	0.00	0.00	0.00	0.17	0.30	0.00	0.38
28	0.00	0.00	0.00	0.00	0.00	0.00	0.00	1.33	0.00	6.92
29	0.00	0.00	0.00	0.00	0.00	0.00	0.06	3.61	0.00	5.47
30	0.00	0.00	0.00	0.00	0.00	0.00	0.00	0.08	0.00	7.63
31	0.00	0.00	0.00	0.00	0.00	0.00	0.00	0.00	0.00	1.63
32	0.00	0.00	0.00	0.00	0.00	0.00	0.00	3.74	0.00	12.68
33	0.00	0.00	0.00	0.00	0.00	0.00	0.00	0.81	0.00	16.75
34	0.00	0.00	0.00	0.00	0.00	0.00	0.00	2.44	0.00	14.42
35	0.00	0.00	0.00	0.00	0.00	0.00	0.00	1.48	0.54	13.84
36	0.00	0.00	0.00	0.00	0.00	0.00	0.00	3.33	0.00	12.10
37	0.00	0.00	0.00	0.00	0.00	0.00	0.00	1.39	0.00	9.56
38	0.00	0.00	0.00	0.00	0.00	0.00	0.02	3.76	0.00	10.96
39	0.00	0.00	0.00	0.00	0.00	0.00	0.15	5.05	0.00	12.67
40	0.00	0.00	0.00	0.00	0.00	0.00	0.00	2.02	0.00	13.24
41	0.00	0.00	0.00	0.00	0.00	0.00	0.00	2.59	0.00	7.81
42	0.00	0.00	0.00	0.00	0.00	0.00	0.00	9.45	1.57	26.30
43	0.00	0.00	0.00	0.00	0.00	0.00	0.00	1.80	2.74	17.55
44	0.00	0.00	0.00	0.00	0.00	0.00	0.00	1.22	0.00	9.27
45	0.00	0.00	0.00	0.00	0.00	0.00	0.00	0.15	0.00	9.66
46	0.00	0.00	0.00	0.00	0.00	0.00	0.00	4.75	0.00	12.00
47	0.00	0.00	0.00	0.00	0.00	0.00	0.00	0.00	0.00	7.76
48	0.00	0.00	0.00	0.00	0.00	0.00	0.00	0.00	0.00	13.19
49	0.00	0.00	0.00	0.00	0.00	0.00	0.00	0.00	0.00	4.03
50	0.00	0.00	0.00	0.00	0.00	0.00	0.00	0.27	0.00	24.10
51	0.00	0.00	0.00	0.00	0.00	0.00	0.00	5.85	0.00	15.98
52	0.00	0.00	0.00	0.00	0.00	0.00	0.00	8.57	0.00	18.10
53	0.00	0.00	0.00	0.00	0.00	0.00	0.00	0.69	0.00	20.19
54	0.00	0.00	0.00	0.00	0.00	0.00	0.00	9.98	0.00	20.26
55	0.00	0.00	0.00	0.00	0.00	0.00	0.00	8.46	0.00	18.25
56	0.00	0.00	0.00	0.00	0.00	0.00	0.00	2.11	0.00	20.95

HS Code	Germany	France	Italy	Spain	UK	China	India	USA	Japan	Brazil
57	0.00	0.00	0.00	0.00	0.00	0.00	0.12	3.65	0.00	35.00
58	0.00	0.00	0.00	0.00	0.00	0.00	0.00	7.56	0.00	26.00
59	0.00	0.00	0.00	0.00	0.00	0.00	0.00	3.68	0.00	22.98
60	0.00	0.00	0.00	0.00	0.00	0.00	0.00	11.06	0.00	26.00
61	0.00	0.00	0.00	0.00	0.00	0.00	0.00	14.33	0.00	35.00
62	0.00	0.00	0.00	0.00	0.00	0.03	0.03	10.82	0.00	35.00
63	0.00	0.00	0.00	0.00	0.00	0.64	0.00	7.97	0.00	33.72
64	0.00	0.00	0.00	0.00	0.00	0.00	0.00	12.18	2.96	33.74
65	0.00	0.00	0.00	0.00	0.00	0.00	0.00	4.45	0.00	19.87
66	0.00	0.00	0.00	0.00	0.00	0.00	0.00	5.27	0.00	19.89
67	0.00	0.00	0.00	0.00	0.00	0.00	0.00	3.63	0.00	16.00
68	0.00	0.00	0.00	0.00	0.00	0.00	0.00	1.61	0.00	8.77
69	0.00	0.00	0.00	0.00	0.00	0.00	0.00	6.64	0.00	14.33
70	0.00	0.00	0.00	0.00	0.00	0.00	0.00	4.81	0.00	11.86
71	0.00	0.00	0.00	0.00	0.00	0.00	0.04	1.44	0.00	9.12
72	0.00	0.00	0.00	0.00	0.00	0.00	0.00	0.21	0.00	11.28
73	0.00	0.00	0.00	0.00	0.00	0.00	0.00	1.37	0.00	14.40
74	0.00	0.00	0.00	0.00	0.00	0.00	0.00	1.10	0.00	8.67
75	0.00	0.00	0.00	0.00	0.00	0.00	0.00	0.43	0.00	8.99
76	0.00	0.00	0.00	0.00	0.00	0.00	0.00	2.55	0.00	9.27
77
78	0.00	0.00	0.00	0.00	0.00	0.00	0.00	0.23	0.00	8.11
79	0.00	0.00	0.00	0.00	0.00	0.00	0.00	1.97	0.00	8.90
80	0.00	0.00	0.00	0.00	0.00	0.00	0.00	0.53	0.00	8.33
81	0.00	0.00	0.00	0.00	0.00	0.00	0.00	5.39	0.00	3.68
82	0.00	0.00	0.00	0.00	0.00	0.00	0.00	3.56	0.00	18.54
83	0.00	0.00	0.00	0.00	0.00	0.00	0.00	3.04	0.00	15.76
84	0.00	0.00	0.00	0.00	0.00	0.00	0.00	0.84	0.00	11.77
85	0.00	0.00	0.00	0.00	0.00	0.00	0.00	0.69	0.00	11.22
86	0.00	0.00	0.00	0.00	0.00	0.00	0.00	2.95	0.00	13.01
87	0.00	0.00	0.00	0.00	0.00	0.00	0.00	3.44	0.00	27.33
88	0.00	0.00	0.00	0.00	0.00	0.00	0.00	0.00	0.00	0.04
89	0.00	0.00	0.00	0.00	0.00	0.00	0.00	0.19	0.00	16.22
90	0.00	0.00	0.00	0.00	0.00	0.00	0.00	1.18	0.00	10.72
91	0.00	0.00	0.00	0.00	0.00	0.00	0.00	0.74	0.12	19.71
92	0.00	0.00	0.00	0.00	0.00	0.00	0.00	4.10	0.00	16.33
93	2.20	2.20	2.20	2.20	2.20	0.00	0.00	0.98	0.00	20.00
94	0.00	0.00	0.00	0.00	0.00	0.00	0.00	1.24	0.00	17.76
95	0.00	0.00	0.00	0.00	0.00	0.00	0.00	0.66	0.00	24.04
96	0.00	0.00	0.00	0.00	0.00	0.00	2.86	4.29	0.00	16.28
97	0.00	0.00	0.00	0.00	0.00	0.00	0.00	0.00	0.00	4.00

Source: ITC market access map

2.3 Identifying SPS measures for agro-exports in the selected countries

Table 7 shows the Sanitary and Phyto-Sanitary (SPS) measures which the agro-exports from Bangladesh face to the selected destinations. This study has considered chapters 1 to 20 of the HS nomenclature as agro and agro-processed products. The SPS measures that are presented in table 7, are collected from the UNCTAD TRAINS.

The SPS measures for EU countries and UK are considered the same as the data shows SPS measures that are declared before Brexit. The SPS measures that the agro-export of Bangladesh face in the selected destinations mainly comprise of;

- Prohibitions/restrictions of imports for sanitary and phytosanitary reasons (A1)
- Tolerance limits for residues and restricted use of substances (A2)
- Labeling, marking, and packaging requirements (A3)
- Hygienic requirements related to sanitary and phytosanitary conditions (A4)
- Treatment for elimination of plant and animal pests and disease-causing organisms in the final product or prohibition of treatment (A5)
- Other requirements relating to production or postproduction processes (A6)
- Conformity assessment related to sanitary and phytosanitary conditions (A8) Sanitary and phytosanitary measures not elsewhere specified (A9)

Under these broad headings (A1- A9) there are some particular sub-headings. These sub headings are detailed in table six.

Table 6: The description of the SPS measures as per the NTM codes¹¹

NTM Code	Title	Description
A11	Prohibitions for sanitary and phytosanitary reasons	Prohibition of imports that can pose sanitary and phytosanitary risks, such as the prohibition of products originating from countries or regions affected by infectious or contagious diseases, or the prohibition of products that can be toxic or poisonous to consumers. Measures included in this category are generally of an ad hoc and time-bound nature

¹¹ [International Classification of Non-tariff Measures - 2019 edition \(unctad.org\)](https://unctad.org/publication/international-classification-non-tariff-measures-2019-edition)

NTM Code	Title	Description
A12	Geographical restrictions on eligibility	Prohibition of imports of specified products from specific countries or regions due to lack of evidence of sufficient safety conditions to avoid sanitary and phytosanitary hazards. The restriction is imposed automatically until the country concerned proves it has employed satisfactory sanitary and phytosanitary measures that are considered acceptable to provide a certain level of protection against hazards. Eligible countries are put on a positive list. Imports from other countries are prohibited. The list may include authorized production establishments within the eligible country.
A13	Systems approach	An approach that combines two or more independent sanitary and phytosanitary measures for the same product. The combined measures can be composed of any number of interrelated measures and conformity-assessment requirements applied during all stages of production.
A14	Authorization requirement for sanitary and phytosanitary reasons for importing certain product	Requirement that the authorization, permit, approval, or license related to a consignment shall be received from a relevant government agency for sanitary and phytosanitary reasons, before the importation can take place.
A15	Authorization requirement for importers for sanitary and phytosanitary reasons	Requirement that the importers (importing company) should be authorized, registered and receive a permit, licence or any other kind of approval to engage in the business of importing certain products. To obtain such approval, importers may need to comply with certain requirements, documentation and registration fees. This includes cases where the registration or authorization of establishments producing certain products is required. The authorization is not tied to each consignment, but is applied to importers to lawfully engage in the business of importation of certain products
A19	Prohibitions or restrictions of imports for sanitary and phytosanitary reasons, not elsewhere specified	NA

NTM Code	Title	Description
A21	Tolerance limits for residues of or contamination by certain (non-microbiological) substances	A measure that establishes a maximum residue limit or tolerance limit of substances such as fertilisers, pesticides and certain chemicals and metals in food and feed that are used during their production process but are not their intended ingredients. The measure includes a permissible maximum level for nonmicrobiological contaminants. Measures related to microbiological contaminants are classified under A4 below.
A22	Restricted use of certain substances in foods and feeds and their contact materials	Restriction on or prohibition of the use of certain substances contained in food and feed. This includes restrictions on substances contained in food containers that might migrate to food.
A31	Labelling requirements	Measures defining the information directly related to food safety, which should be provided to the consumer. Labelling is any written, electronic or graphic communication on the consumer packaging or on a separate but associated label
A32	Marking requirement	Measures defining the information for transport and customs that the transport or distribution packaging of goods should carry that is directly related to sanitary and phytosanitary conditions
A33	Packaging requirements	Measures regulating the mode in which goods must or cannot be packed or defining the packaging materials to be used, which are directly related to food safety
A41	Microbiological criteria of the final product	Statement regarding the microorganisms of concern and/or their toxins/ metabolites and the reason for that concern, the analytical methods for their detection and/or quantification in the final product. Microbiological limits should take into consideration the risk associated with the microorganisms and the conditions under which the product is expected to be handled and consumed. Microbiological limits should also take into account the likelihood of uneven distribution of microorganisms in the product and the inherent variability of the analytical procedure.
A42	Hygienic practices during production related to sanitary and phytosanitary conditions	Requirements that the establishments and equipment used during the manufacturing and processing stages of the products should be clean and meet sanitary conditions. This measure also includes good hygienic practices for the personnel taking part in any stage of manufacturing.
A49	Hygienic requirements not elsewhere specified	NA

NTM Code	Title	Description
A51	Cold or heat treatment	Requirement of cooling or heating of products below or above a certain temperature for a certain period of time to kill targeted pests, either prior to, or upon arrival in the destination country. Specific facilities on land or ships could be requested. If the latter, containers should be equipped properly to conduct cold or heat treatment and should include temperature sensors
A52	Irradiation	Requirement to kill or devitalize microorganisms, bacteria, viruses, or insects that might be present in food and feed products by using irradiated energy (ionizing radiation).
A53	Fumigation	A process of exposing insects, fungal spores or other organisms to the fumes of a chemical at a lethal strength in an enclosed space for a given period of time. A fumigant is a chemical, which at a required temperature and pressure, can exist in a gaseous state in sufficient concentration to be lethal to a given pest organism.
A59	Treatments to eliminate plants and animal pests or disease-causing organisms in the final product not elsewhere specified or prohibition of treatment	NA
A61	Plant-growth processes	Requirements relating to how a plant should be grown in terms of conditions such as those related to temperature, light, spacing between plants, water, oxygen and mineral nutrients
A62	Animal-raising or -catching processes	Requirements relating to how an animal should be raised or caught in light of sanitary and phytosanitary concerns.
A63	Food and feed processing	Requirements relating to how food or feed production should take place in order to meet sanitary conditions for the final products.
A64	Storage and transport conditions	Requirements relating to certain conditions under which food and feed, plants and animals should be stored and/or transported.
A69	Other requirements relating to production or postproduction processes not elsewhere specified	NA

NTM Code	Title	Description
A81	Product registration and approval requirement	Requirement that the product shall be registered or approved before it can be imported. Normally, the products must be proven to be safe to be registered or approved. This type of requirement might generally apply to products such as food additives. Unlike A14, this requirement is not tied to a consignment. The measure may include provisions describing types of pest-control products that are exempt from registration and procedures detailing the registration process, including provisions relating to distribution, import, sampling and detention.
A82	Testing requirements	Requirements that products be tested against a given regulation, such as a maximum residue limit. This type of measure includes cases where there are sampling requirements.
A83	Certification requirements	Certification of conformity with a given regulation that is required by the importing country but may be issued in the exporting or the importing country
A84	Inspection requirements	Product inspection required by the importing country; may be performed by public or private entities; does not include laboratory analysis
A85	Traceability requirements	Information disclosure requirements that make it possible to track a product through the stages of production, processing and distribution. This measure includes recordkeeping requirements.
A851	Origin of materials and parts	Requirements relating to the disclosure of information on the origin of materials and parts used in the final product. This measure includes recordkeeping requirements.
A852	Processing history	Requirements relating to the disclosure of information during all stages of production. This measure includes recordkeeping. The information required may include the location, processing methods and/or equipment and materials used
A853	Distribution and location of products after delivery	Requirements relating to the disclosure of information on when and how the goods have been distributed from the time of their delivery to distributors until they reach the final consumer. This measure includes recordkeeping requirements.
A859	Traceability requirements not elsewhere specified	NA

NTM Code	Title	Description
A86	Quarantine requirements	Requirements to detain or isolate animals, plants or their products on arrival in a port or place for a given period to prevent the spread of infectious or contagious disease or contamination
A89	Conformity assessment related to sanitary and phytosanitary conditions not elsewhere specified	NA
A9	Sanitary and phytosanitary measures not elsewhere specified	NA

The details of the SPS measures faced by the agro-exports of Bangladesh to the selected destinations are presented in table 7.

Table 7: SPS measures faced by the agro exports of Bangladesh to the selected destinations

HS Code	EU+UK	China	India	US	Japan	Brazil
01	A12, A14, A15, A19, A21, A22, A64, A82, A83, A84	A11, A14, A19, A22, A33, A62, A69, A82, A83, A84, A851, A86	A14A69, A82, A83, A84, A851, A859, A86, A89	A11, A12, A13, A14, A15, A31, A33, A42, A62, A63, A64, A8, A81, A83, A84, A85, A852, A59, A86, A89	A11, A12, A31, A33, A41, A59, A62, A64, A83, A85, A86, A9	A11, A13, A14, A15, A42, A49, A51, A82, A83, A84, A85, A851, A86, A9
02	A4, A12, A14, A21, A31, A63, A82, A83, A84, A85, A64	A11, A14, A19, A21, A31, A33, A41, A51, A63, A64, A82, A84, A851, A852, A853	A14, A15, A19, A21, A22, A31, A33, A41, A42, A49, A52, A53, A64, A69, A82, A83, A84	A12, A13, A14, A15, A21, A22, A31, A32, A33, A41, A42, A63, A64, A8, A83, A84, A85, A851, A852	A11, A21, A31, A33, A41, A42, A49, A51, A59, A62, A64, A83, A85, A86	A11, A13, A14, A15, A22, A31, A33, A42, A49, A51, A82, A83, A84, A85, A851, A89
03	A12, A14, A21, A22, A31, A32, A33, A4, A41, A63, A64, A82, A83, A84, A85	A14, A15, A19, A31, A33, A41, A63, A64, A69, A82, A83, A84	A14, A15, A19, A21, A22, A31, A33, A41, A42, A49, A52, A64, A69, A82, A83, A84	A13, A14, A15, A21, A22, A31, A33, A41, A42, A62, A63, A64, A8, A82, A83, A84, A851, A852, A89, A9	A14, A21, A31, A41, A42, A62, A82, A83, A85	A11, A13, A14, A15, A22, A31, A33, A42, A82, A83, A84, A86, A851, A89

HS Code	EU+UK	China	India	US	Japan	Brazil
04	A12, A14, A21, A22, A31, A4, A63, A64, A82, A83, A84, A85	A11, A14, A19, A31, A33, A41, A63, A64, A82, A83, A84, A852, A86	A14, A15, A19, A21, A22, A31, A33, A41, A42, A49, A53, A63, A64, A69, A82, A83, A84	A11, A12, A13, A14, A15, A21, A22, A31, A32, A33, A41, A42, A51, A62, A63, A64, A69, A82, A83, A84, A85, A851, A852, A9	A11, A21, A31, A41, A42, A49, A64, A69, A83, A85, A859, A86	A11, A13, A14, A15, A21, A22, A31, A33, A41, A42, A82, A83, A84, A86, A851, A89
05	A12, A21, A31, A4, A63, A82, A83, A84, A85	A11, A14, A19, A31, A33, A82, A83, A84, A86	A14, A15, A19, A21, A22, A31, A33, A41, A42, A49, A53, A64, A69, A82, A83, A84	A13, A14, A15, A22, A31, A32, A33, A41, A42, A63, A64, A69, A83, A84, A851, A852, A9	A12, A21, A31, A41, A42, A49, A51, A64, A83, A85, A86	A11, A13, A14, A15, A22, A42, A49, A51, A82, A83, A84, A86, A851, A89
06	A15, A19, A83, A84	A14, A82, A84, A86	A14, A31, A32, A33, A5, A51, A53, A64, A69, A8, A82, A83, A84, A86	A11, A12, A14, A31, A33, A51, A52, A53, A61, A69, A83, A84, A89	A41, A83, A86	A14, A15, A33, A81, A82, A83, A84, A851, A86
07	A12, A13, A14, A15, A19, A21, A22, A31, A32, A33, A41, A42, A63, A83, A84, A85, A851, A852, A853	A14, A15, A19, A21, A31, A33, A59, A61, A63, A64, A82, A83, A84, A86, A89	A13, A14, A15, A19, A21, A22, A31, A32, A33, A4, A41, A42, A49, A5, A52, A53, A59, A61, A64, A69, A8, A81, A82, A83, A84, A851, A859, A86	A2, A13, A14, A15, A21, A22, A31, A33, A41, A42, A51, A53, A63, A64, A83, A84, A851, A852, A9	A19, A21, A31, A41, A42, A83, A85, A86	A13, A14, A15, A22, A33, A41, A42, A51, A81, A82, A83, A84, A851, A86, A89

HS Code	EU+UK	China	India	US	Japan	Brazil
08	A12, A13, A14, A15, A19, A21, A22, A31, A33, A41, A42, A63, A83, A84, A85, A851, A852, A853	A14, A19, A21, A31, A33, A41, A63, A64, A69, A82, A83, A84, A86	A11, A14, A15, A19, A21, A22, A31, A33, A4, A41, A42, A49, A5, A52, A53, A64, A69, A8, A82, A83, A84, A86	A11, A12, A13, A14, A15, A21, A22, A31, A33, A41, A42, A51, A53, A61, A63, A64, A69, A82, A83, A84, A85, A851, A852, A9	A19, A21, A31, A41, A42, A83, A85, A86	A11, A13, A14, A15, A22, A31, A33, A41, A42, A82, A83, A84, A851, A86, A89, A9
09	A12, A13, A14, A15, A19, A21, A22, A31, A33, A41, A42, A63, A83, A84, A85, A851, A852, A853	A14, A19, A31, A33, A82, A84, A853, A86	A14, A15, A19, A21, A22, A31, A33, A4, A41, A42, A49, A5, A52, A53, A61, A64, A69, A8, A81, A82, A83, A84, A851, A859	A12, A13, A14, A15, A21, A22, A31, A33, A41, A42, A51, A53, A63, A64, A83, A84, A851, A852	A21, A31, A41, A42, A83, A85, A86	A13, A14, A15, A22, A33, A41, A42, A51, A69, A81, A82, A83, A84, A851, A86, A89, A9
10	A12, A13, A14, A15, A19, A21, A22, A31, A32, A33, A41, A42, A63, A83, A84, A85, A851, A852, A853	A14, A15, A19, A21, A31, A33, A41, A49, A59, A63, A64, A82, A83, A84, A86, A89	A13, A14, A15, A19, A21, A22, A31, A32, A33, A41, A42, A5, A52, A53, A61, A64, A69, A8, A81, A82, A83, A84, A851, A859, A86	A12, A13, A14, A15, A21, A22, A31, A33, A41, A42, A51, A53, A63, A64, A83, A84, A851, A852, A9	A19, A21, A31, A41, A42, A83, A85, A86	A11, A14, A15, A22, A31, A33, A42, A51, A81, A82, A83, A84, A851, A86, A89
11	A12, A13, A14, A15, A19, A21, A22, A31, A32, A33, A41, A42, A63, A85, A851, A852, A853	A14, A19, A31, A33, A63, A82, A83, A84, A86	A14, A15, A19, A21, A22, A31, A33, A4, A41, A42, A49, A5, A64, A69, A8, A82, A83, A84	A13, A15, A22, A31, A33, A41, A42, A63, A64, A82, A851, A852	A21, A31, A41, A42, A85	A13, A14, A15, A22, A33, A41, A82, A83, A84, A851, A86, A89, A9

HS Code	EU+UK	China	India	US	Japan	Brazil
12	A12, A13, A14, A15, A19, A21, A22, A31, A32, A33, A41, A42, A63, A83, A84, A85, A851, A852, A853	A14, A15, A19, A21, A31, A33, A41, A49, A59, A61, A63, A64, A82, A83, A84, A851, A852, A853, A86, A89	A13, A14, A15, A19, A21, A22, A31, A32, A33, A41, A42, A49, A5, A53, A61, A64, A69, A8, A81, A82, A83, A84, A851, A859, A86	A12, A13, A14, A15, A21, A22, A31, A33, A41, A42, A5, A51, A53, A63, A64, A82, A83, A84, A85, A851, A852, A89, A9	A21, A31, A41, A42, A51, A62, A83, A85, A86	A11, A13, A14, A15, A19, A22, A31, A33, A41, A42, A51, A69, A81, A82, A83, A84, A851, A86, A89
13	A13, A15, A19, A21, A22, A31, A32, A33, A41, A42, A63, A85, A851, A852, A853	A14, A19, A31, A33, A41, A63, A64, A82, A84, A851, A852, A853, A86	A14, A15, A19, A21, A22, A31, A33, A41, A42, A49, A5, A64, A69, A8, A82, A83, A84	A13, A14, A15, A22, A31, A33, A41, A42, A53, A63, A64, A83, A84, A851, A852, A9	A11, A21, A31, A41, A42, A85	A13, A14, A15, A22, A33, A82, A83, A84, A851, A86
14	A12, A13, A14, A15, A19, A21, A22, A31, A33, A41, A42, A63, A83, A84, A851, A852, A853	A14, A31, A33, A64, A82, A84, A851, A852, A853, A86	A14, A15, A31, A33, A42, A5, A64, A8, A82, A83, A84	A12, A14, A82, A89	A11, A31, A41, A83, A85, A86	A14, A15, A33, A82, A83, A84, A851, A86
15	A12, A13, A15, A19, A22, A31, A32, A33, A4, A41, A42, A6, A63, A82, A83, A84, A85, A851, A852, A853	A11, A14, A15, A19, A31, A33, A41, A49, A63, A64, A82, A83, A84, A851, A86	A14, A15, A19, A21, A22, A31, A33, A41, A42, A49, A5, A53, A63, A64, A69, A8, A82, A83, A84	A13, A14, A15, A21, A22, A31, A33, A41, A42, A63, A64, A8, A83, A851, A852, A9	A21, A22, A31, A41, A42, A64, A83, A85, A86	A13, A14, A15, A22, A33, A41, A42, A82, A83, A84, A851, A89

HS Code	EU+UK	China	India	US	Japan	Brazil
16	A12, A21, A31, A33, A4, A41, A63, A82, A83, A84, A85	A11, A14, A19, A31, A33, A63, A64, A82, A83, A84, A85, A853, A86	A14, A15, A19, A21, A22, A31, A33, A41, A42, A49, A64, A69, A8, A82, A83, A84	A12, A13, A14, A15, A21, A22, A31, A32, A33, A41, A42, A51, A63, A64, A69, A8, A83, A84, A85, A851, A852, A9	A11, A21, A31, A41, A42, A49, A51, A64, A82, A83, A85, A86	A13, A14, A15, A22, A33, A41, A42, A49, A51, A82, A83, A84, A851
17	A12, A13, A15, A19, A21, A22, A31, A32, A33, A4, A41, A42, A63, A82, A83, A84, A85, A851, A852, A853	A14, A15, A19, A31, A33, A41, A63, A82, A83, A84, A851, A852, A853, A86	A14, A15, A19, A21, A22, A31, A33, A41, A42, A49, A5, A63, A64, A69, A8, A82, A83, A84	A13, A14, A15, A22, A31, A33, A41, A42, A63, A64, A82, A83, A851, A852, A9	A11, A21, A31, A41, A42, A85	A13, A14, A15, A22, A33, A41, A82, A83, A84, A851, A86, A89
18	A12, A13, A14, A15, A21, A22, A31, A33, A41, A42, A63, A85, A851, A852, A853	A14, A19, A31, A33, A63, A82, A83, A84, A86	A14, A15, A19, A21, A22, A31, A33, A4, A41, A42, A49, A5, A64, A69, A8, A82, A83, A84	A13, A15, A22, A31, A33, A41, A42, A51, A53, A63, A64, A82, A851, A852, A9	A21, A31, A41, A42, A85	A13, A14, A15, A22, A31, A33, A41, A82, A83, A84, A851, A86, A89
19	A12, A13, A15, A21, A22, A31, A33, A4, A41, A42, A63, A82, A83, A84, A85, A851, A852, A853	A14, A19, A31, A33, A63, A82, A83, A84, A86	A14, A15, A19, A21, A22, A31, A33, A41, A42, A49, A5, A63, A64, A69, A8, A82, A83, A84	A13, A15, A21, A22, A31, A33, A41, A42, A63, A64, A8, A82, A851, A852, A9	A21, A31, A41, A42, A82, A85	A13, A14, A15, A22, A33, A41, A81, A82, A83, A84, A851, A852, A86, A89

HS Code	EU+UK	China	India	US	Japan	Brazil
20	A12, A13, A15, A21, A22, A31, A33, A41, A42, A63, A82, A83, A85, A851, A852, A853	A14, A19, A31, A33, A41, A63, A64, A82, A83, A84, A86	A15, A19, A21, A22, A31, A33, A41, A42, A49, A53, A64, A69, A82, A83, A84	A13, A15, A22, A31, A33, A41, A42, A51, A63, A64, A69, A8, A82, A84, A851, A852, A9	A21, A31, A41, A42, A82, A85	A13, A14, A15, A21, A22, A33, A41, A81, A82, A83, A84, A851, A852, A86, A89

Source: Author's compilation from UNCTAD TRAINS

2.4 Identifying the NTMs/ NTBs in the selected countries

In this section, we have presented the Non- Tariff Measures (NTMs) that the exporting commodities of Bangladesh face or might face in the selected destinations. Table 9 shows the NTMs for all products ranging from HS code chapter 1 to 97. The NTMs presented in table 9 are collected from UNCTAD TRAINS. Same as section 2.3, the NTMs for EU countries and UK are considered the same as the data shows NTMs that are declared before Brexit.

The NTMs that the exports from Bangladesh generally face are as follows,

- Sanitary and phytosanitary measures (A)
- Technical barriers to trade (B)
- Pre-shipment inspection and other formalities (C)
- Non-automatic import licensing, quotas, prohibitions, quantity-control measures, and other restrictions not including sanitary and phytosanitary measures or measures relating to technical barriers to trade (E)
- Price-control measures, including additional taxes and charges (F)
- Finance measures (G)
- Measures affecting competition (H)
- Export-related measures (P)

Among the selected destinations, China is seen to impose more NTMs than the rest of the nine selected destinations. Table eight below, describes the NTM codes faced by the exports of Bangladesh to the selected destinations are detailed in table 8¹².

Table 8: The description of each of the NTM codes that Bangladeshi exports face/ might face in the selected destinations for HS chapter 1 to 97

NTM Code	Title	Description
A11	Prohibitions for sanitary and phytosanitary reasons	Prohibition of imports that can pose sanitary and phytosanitary risks, such as the prohibition of products originating from countries or regions affected by infectious or contagious diseases, or the prohibition of products that can be toxic or poisonous to consumers. Measures included in this category are generally of an ad hoc and time-bound nature

¹² [International Classification of Non-tariff Measures - 2019 edition \(unctad.org\)](https://unctad.org/publication/international-classification-non-tariff-measures-2019-edition)

NTM Code	Title	Description
A12	Geographical restrictions on eligibility	Prohibition of imports of specified products from specific countries or regions due to lack of evidence of sufficient safety conditions to avoid sanitary and phytosanitary hazards. The restriction is imposed automatically until the country concerned proves it has employed satisfactory sanitary and phytosanitary measures that are considered acceptable to provide a certain level of protection against hazards. Eligible countries are put on a positive list. Imports from other countries are prohibited. The list may include authorized production establishments within the eligible country.
A13	Systems approach	An approach that combines two or more independent sanitary and phytosanitary measures for the same product. The combined measures can be composed of any number of interrelated measures and conformity-assessment requirements applied during all stages of production.
A14	Authorization requirement for sanitary and phytosanitary reasons for importing certain product	Requirement that the authorization, permit, approval or licence related to a consignment shall be received from a relevant government agency for sanitary and phytosanitary reasons, before the importation can take place.
A15	Authorization requirement for importers for sanitary and phytosanitary reasons	Requirement that the importers (importing company) should be authorized, registered and receive a permit, licence or any other kind of approval to engage in the business of importing certain products. To obtain such approval, importers may need to comply with certain requirements, documentation and registration fees. This includes cases where the registration or authorization of establishments producing certain products is required. The authorization is not tied to each consignment, but is applied to importers to lawfully engage in the business of importation of certain products
A19	Prohibitions or restrictions of imports for sanitary and phytosanitary reasons, not elsewhere specified	NA

NTM Code	Title	Description
A21	Tolerance limits for residues of or contamination by certain (non-microbiological) substances	A measure that establishes a maximum residue limit or tolerance limit of substances such as fertilisers, pesticides and certain chemicals and metals in food and feed that are used during their production process but are not their intended ingredients. The measure includes a permissible maximum level for nonmicrobiological contaminants. Measures related to microbiological contaminants are classified under A4 below.
A22	Restricted use of certain substances in foods and feeds and their contact materials	Restriction on or prohibition of the use of certain substances contained in food and feed. This includes restrictions on substances contained in food containers that might migrate to food.
A31	Labelling requirements	Measures defining the information directly related to food safety, which should be provided to the consumer. Labelling is any written, electronic or graphic communication on the consumer packaging or on a separate but associated label
A32	Marking requirement	Measures defining the information for transport and customs that the transport or distribution packaging of goods should carry that is directly related to sanitary and phytosanitary conditions
A33	Packaging requirements	Measures regulating the mode in which goods must or cannot be packed or defining the packaging materials to be used, which are directly related to food safety
A41	Microbiological criteria of the final product	Statement regarding the microorganisms of concern and/or their toxins/ metabolites and the reason for that concern, the analytical methods for their detection and/or quantification in the final product. Microbiological limits should take into consideration the risk associated with the microorganisms and the conditions under which the product is expected to be handled and consumed. Microbiological limits should also take into account the likelihood of uneven distribution of microorganisms in the product and the inherent variability of the analytical procedure.
A42	Hygienic practices during production related to sanitary and phytosanitary conditions	Requirements that the establishments and equipment used during the manufacturing and processing stages of the products should be clean and meet sanitary conditions. This measure also includes good hygienic practices for the personnel taking part in any stage of manufacturing.
A49	Hygienic requirements not elsewhere specified	NA

NTM Code	Title	Description
A51	Cold or heat treatment	Requirement of cooling or heating of products below or above a certain temperature for a certain period of time to kill targeted pests, either prior to, or upon arrival in the destination country. Specific facilities on land or ships could be requested. If the latter, containers should be equipped properly to conduct cold or heat treatment and should include temperature sensors
A52	Irradiation	Requirement to kill or devitalize microorganisms, bacteria, viruses, or insects that might be present in food and feed products by using irradiated energy (ionizing radiation).
A53	Fumigation	A process of exposing insects, fungal spores or other organisms to the fumes of a chemical at a lethal strength in an enclosed space for a given period of time. A fumigant is a chemical, which at a required temperature and pressure, can exist in a gaseous state in sufficient concentration to be lethal to a given pest organism.
A59	Treatments to eliminate plants and animal pests or disease-causing organisms in the final product not elsewhere specified or prohibition of treatment	NA
A61	Plant-growth processes	Requirements relating to how a plant should be grown in terms of conditions such as those related to temperature, light, spacing between plants, water, oxygen and mineral nutrients
A62	Animal-raising or -catching processes	Requirements relating to how an animal should be raised or caught in light of sanitary and phytosanitary concerns.
A63	Food and feed processing	Requirements relating to how food or feed production should take place in order to meet sanitary conditions for the final products.
A64	Storage and transport conditions	Requirements relating to certain conditions under which food and feed, plants and animals should be stored and/or transported.
A69	Other requirements relating to production or postproduction processes not elsewhere specified	NA

NTM Code	Title	Description
A81	Product registration and approval requirement	Requirement that the product shall be registered or approved before it can be imported. Normally, the products must be proven to be safe to be registered or approved. This type of requirement might generally apply to products such as food additives. Unlike A14, this requirement is not tied to a consignment. The measure may include provisions describing types of pest-control products that are exempt from registration and procedures detailing the registration process, including provisions relating to distribution, import, sampling and detention.
A82	Testing requirements	Requirements that products be tested against a given regulation, such as a maximum residue limit. This type of measure includes cases where there are sampling requirements.
A83	Certification requirements	Certification of conformity with a given regulation that is required by the importing country but may be issued in the exporting or the importing country
A84	Inspection requirements	Product inspection required by the importing country; may be performed by public or private entities; does not include laboratory analysis
A85	Traceability requirements	Information disclosure requirements that make it possible to track a product through the stages of production, processing and distribution. This measure includes recordkeeping requirements.
A851	Origin of materials and parts	Requirements relating to the disclosure of information on the origin of materials and parts used in the final product. This measure includes recordkeeping requirements.
A852	Processing history	Requirements relating to the disclosure of information during all stages of production. This measure includes recordkeeping. The information required may include the location, processing methods and/or equipment and materials used
A853	Distribution and location of products after delivery	Requirements relating to the disclosure of information on when and how the goods have been distributed from the time of their delivery to distributors until they reach the final consumer. This measure includes recordkeeping requirements.
A859	Traceability requirements not elsewhere specified	NA

NTM Code	Title	Description
A86	Quarantine requirements	Requirements to detain or isolate animals, plants or their products on arrival in a port or place for a given period to prevent the spread of infectious or contagious disease or contamination
A89	Conformity assessment related to sanitary and phytosanitary conditions not elsewhere specified	NA
A9	Sanitary and phytosanitary measures not elsewhere specified	NA
B14	Authorization requirements for importing certain products	Under these requirements, authorization, permits, approvals or licences related to a consignment must be received from a relevant government agency before the importation can take place in order to comply with relevant technical regulations or conformity-assessment procedures.
B15	Authorization requirements for importers	Requirements to the effect that the importers (for example, the importing company) should be authorized, registered, receive a permit, licence or any other kind of approval to engage in the business of importing certain products to comply with relevant technical regulations or conformity-assessment procedures. To obtain such approval, importers may need to comply with certain requirements, documentation and registration fees. The measure also include cases when the registration authorization of establishments producing certain products is required. The authorization is not tied to each consignment; instead it is applied to importers so that they can engage lawfully in the business of importing certain products
B19	Import authorization/licensing related to technical barriers to trade not elsewhere specified	NA
B21	Tolerance limits for residues of or contamination by certain substances	A measure that establishes a maximum level or tolerance limit of substances that are used during their production process but are not their intended ingredients.
B22	Restricted use of certain substances	Restriction on the use of certain substances such as components or material to prevent any risks arising from their use.

NTM Code	Title	Description
B31	Labelling requirements	Measures regulating the kind, colour and size of printing on packages and labels and defining the information that should be provided to the consumer. Labelling is any written, electronic, or graphic communication on the packaging or on a separate but associated label, or on the product itself. It may include requirements concerning the official language to be used, as well as technical information on the product, such as voltage, components, instructions on use, and safety and security advice
B32	Marking requirements	Measures defining the information for transport and customs that the transport or distribution packaging of goods should carry
B33	Packaging requirements	Measures regulating the mode in which goods must be or cannot be packed and defining the packaging materials to be used.
B41	Technical barriers to trade regulations on production processes	Requirements concerning production processes not classified under the chapter on sanitary and phytosanitary measures. This measure excludes specific measures under B2, Tolerance limits for residues and restricted use of substances (or its subcategories)
B42	Technical barriers to trade regulations on transport and storage	Requirements concerning certain conditions under which products should be stored and/or transported.
B49	Production or post-production requirements not elsewhere specified	NA
B6	Product identity requirements	Conditions to be satisfied in order to identify a product with a certain denomination, including biological or organic labels.
B7	Product quality, safety or performance requirements	Final product requirements concerning safety (for example, fire resistance), performance (effectiveness in achieving the intended or claimed result), quality (for example, content of defined ingredients and durability) or other reasons relating to technical barriers to trade not covered under other measures.
B8	Conformity assessment related to technical barriers to trade	Requirement for verification that a given requirement related to technical barriers to trade has been met. This could be achieved by an inspection and approval procedure or combined forms thereof, including procedures for sampling, testing and inspection; evaluation, verification and assurance of conformity; and accreditation and approval.

NTM Code	Title	Description
B81	Product registration/approval requirements	Requirements to the effect that the product must be registered or approved before it can be imported. Normally, to be registered or approved, the products must be proven safe and effective. This type of requirement would generally apply to sensitive products such as new drugs or medical devices. Unlike B14, these requirements are not tied to a consignment.
B82	Testing requirements	Requirements for products to be tested for compliance with a given specification, such as performance level. This measure includes sampling requirements.
B83	Certification requirements	Certification of conformity with a given regulation. Certification is required by the importing country but may be issued in the exporting or the importing country.
B84	Inspection requirements	Product inspections required by the importing country. Inspections may be performed by public or private entities; laboratory analysis is not included.
B85	Traceability requirements	Information disclosure requirements that make it possible to track a product through the stages of production, processing and distribution. This measure includes recordkeeping requirements.
B851	Origin of materials and parts	Requirements relating to the disclosure of information on the origin of materials and parts used in the final product. This measure includes recordkeeping requirements.
B852	Processing history	Requirements relating to the disclosure of information on all stages of production. This measure includes recordkeeping requirements and may include locations, processing methods and/or equipment and materials used.
B853	Distribution and location of products after delivery	Requirements relating to the disclosure of information on when and/ or how the products have been distributed during any time after production and before final consumption. This measure includes recordkeeping requirements.
B859	Traceability requirements not elsewhere specified	NA
B89	Conformity assessment related to technical barriers to trade not elsewhere specified	NA
B9	Technical barriers to trade measures not elsewhere specified	NA

NTM Code	Title	Description
C1	Pre-shipment inspection	Compulsory quality, quantity and price control of goods prior to shipment from the exporting country, conducted by an independent inspecting agency mandated by the authorities of the importing country
C3	Requirement to pass through specified port of customs	Obligation for imports to pass through a designated entry point and/or customs office for inspection, testing and the like.
C4	Import monitoring, surveillance and automatic licensing measures	Administrative measures that seek to monitor the import value or volume of specified products
C9	Other formalities not elsewhere specified	NA
E1	Non-automatic import-licensing procedures other than authorizations covered under the chapters on sanitary and phytosanitary measures and technical barriers to trade	An import-licensing procedure, other than the procedures covered under the chapters on sanitary and phytosanitary measures or technical barriers to trade, where approval is not granted in all cases. The approval may either be granted on a discretionary basis or may require specific criteria to be met before it is granted
E11	Licensing for economic reasons	NA
E111	Licensing procedure with no specific ex ante criteria	Licensing procedure where approval is granted at the discretion of the issuing authority. This measure is also referred to as a discretionary licence
E112	Licensing for specified use	Licensing procedure where approval is granted solely for imports of products to be used for a pre-specified purpose. Such a licence is normally granted for use in operations generating anticipated benefits in important domains of the economy
E119	Licensing for economic reasons not elsewhere specified	NA
E121	Licensing for religious, moral or cultural reasons	Control of imports by licence for religious, moral or cultural reasons not established in technical regulations.
E125	Licensing for the protection of public health	Control of imports for public-health reasons.

NTM Code	Title	Description
E129	Licensing for non-economic reasons not elsewhere specified	NA
E211	Global allocation	Permanent quotas where no condition is attached to the country of origin of the product.
E231	Global allocation	Temporary quotas where no condition is attached to the country of origin of the product
E311	Full prohibition (import ban)	Prohibition without any additional condition or qualification.
E321	Prohibition for religious, moral or cultural reasons	Prohibition of imports for religious, moral or cultural reasons not established in technical regulations.
E329	Prohibition for non-economic reasons not elsewhere specified	NA
E611	Global allocation	WTO-bound tariff-rate quotas where no condition is attached to the country of origin of the product.
E621	Global allocation	Non-WTO bound tariff -rate quotas where no conditions are attached to the country of origin of the product.
E622	Country allocation	Non-WTO-bound tariff-rate quotas where a fixed volume or value of the product must originate in one or more countries.
F19	Other administrative measures affecting the customs value not elsewhere specified	NA
F61	Custom inspection, processing and servicing fees	NA
F62	Merchandise-handling or -storing fees	NA
F65	Merchandise-handling or -storing fees	NA
F69	Additional charges not elsewhere specified	NA
F71	Consumption taxes	Taxes on sales of products that are generally applied to all or most products.
F72	Excise taxes	Taxes imposed on selected types of commodities, usually of a luxurious or nonessential nature. Excise taxes are levied separately from, and in addition to, general sales taxes.

NTM Code	Title	Description
F73	Taxes and charges for sensitive product categories	Charges that include emission charges, (sensitive) product taxes and administrative charges. Administrative charges are meant to recover the costs of administrative control systems.
F79	Internal taxes and charges levied on imports not elsewhere specified	NA
F9	Price-control measures, not elsewhere specified	NA
G11	Advance import deposits	Requirements to the effect that the importer should deposit a percentage of the value of the import transaction before receiving the goods. No interest is paid on the deposits.
G32	Bank authorization	A requirement to obtain a special import authorization from the central bank.
G9	Finance measures not elsewhere specified	NA
H11	State-trading enterprises, for importing	Enterprises (whether or not State-owned or -controlled) with special rights and privileges not available to other entities, which influence through their purchases and sales the level or direction of imports of particular products. Such enterprises include statutory marketing boards with exclusive rights to control the imports of certain grains, canalizing agencies with an exclusive right to distribute petroleum, sole importing agencies or importation reserved for specific importers regarding certain categories of goods.
H19	Other selective import channels not elsewhere specified	NA
H22	Compulsory national transport	A requirement that imports must be carried by a national shipping company
H29	Compulsory national service not elsewhere specified	NA
I2	Trade-balancing measures	Restrictions on the importation of products used in or related to local production, including in relation to the amount of local products exported, or limitations on access to foreign exchange used for such importation based on the foreign exchange inflows attributable to the enterprise in question.
I9	Trade-related investment measures not elsewhere specified	NA

NTM Code	Title	Description
P11	Authorization or permit requirements to export, for technical reasons	Requirements to obtain a licence or a permit by the Government of the exporting country to export products for technical reasons, i.e. relating to product characteristics or their related processes and production methods.
P12	Export registration requirements for technical reasons	Requirements to the effect that products or exporters should be registered before exportation.
P13	Production and post-production requirements to export	Requirements relating to production and post-production processes, including, inter alia, hygienic requirements, treatments for the elimination of plant and animal pests and disease-causing organisms, as well as requirements concerning the conditions under which products should be stored and/or transported before they can be exported
P14	Product quality, safety, or performance requirements	Final product requirements relating to safety, performance, quality, tolerance limits for residues and the restricted use of certain substances.
P15	Labelling, marking, or packaging requirements	Requirements to the effect that the products should be labelled, marked or packaged in a certain way before they can be exported.
P161	Testing requirements	Requirements by the exporting country to conduct testing of products against given requirements, before they can be exported. These measures include sampling requirements
P162	Inspection requirements	Requirements by the exporting country to conduct an inspection of the products before they can be exported; laboratory testing not included.
P163	Certification required by exporting country	Requirement by the exporting country to obtain sanitary, phytosanitary or other certification before the goods are exported.
P169	Conformity-assessment measures not elsewhere specified	NA
P19	Technical export measures not elsewhere specified	NA
P21	Requirements to pass through specified port of customs for exports	Obligation for exports to pass through a designated entry point and/or customs office for inspection, testing and so forth.
P22	Export monitoring and surveillance requirements	Administrative measures that seek to monitor the export value or volume of specified products.

NTM Code	Title	Description
P29	Export formalities not elsewhere specified	NA
P3	Export licences, export quotas, export prohibition and other restrictions other than sanitary and phytosanitary or technical barriers to trade measures	Restrictions to the quantity of goods exported to a specific country or countries by the Government of the exporting country for reasons such as a shortage of goods in the domestic market, the regulation of domestic prices, prevention of anti-dumping measures or for political reasons. Trade-related investment measures in the form of export restrictions are included in this category. Export prohibitions or restrictions other than duties, taxes or other charges are generally prohibited by GATT (1994) article XI. However, they can be applied under specifically determined circumstances (for example, articles XX and XXI of the Agreement).
P31	Export prohibition	Prohibition of exports of certain products.
P32	Export quotas	Quotas that limit the value or volume of exports.
P33	Licensing, permit or registration requirements to export	Requirements by the Government of the exporting country to obtain a licence or permit or to register before exporting products
P39	Export restrictions not elsewhere specified	NA
P4	Export price-control measures, including additional taxes and charges	NA
P42	Export taxes and duties	Taxes collected on exported goods by the Government of the exporting country. Such taxes can be set either on a specific or an ad valorem basis.
P43	Export charges or fees levied in connection with services provided	Charges or fees required for services rendered.
P5	State-trading enterprises, for exporting; other selective export channels	NA
P51	State-trading enterprises, for exporting	Enterprises (whether or not State-owned or -controlled) with special rights and privileges not available to other entities, which influence through their purchases and sales the level or direction of exports of particular products.

NTM Code	Title	Description
P59	Other selective export channels not elsewhere specified	NA
P6	Export-support measures	Financial contributions by a Government or public body, or by government entrustment or direction of a private body (direct or potential direct transfer of funds: for example, grants, loans, equity infusions, guarantees; government revenue foregone; provision of goods or services or purchase of goods; and payments to a funding mechanism), or income or price support, which confers a benefit and is contingent in law or in fact upon export performance (whether solely or as one of several conditions), including measures illustrated in annex I of the Agreement on Subsidies and Countervailing Measures and measures described in the Agreement on Agriculture
P7	Measures on re-export	Measures applied by the Government of the exporting country on exported goods that have originally been imported from abroad.
P9	Export measures not elsewhere specified	NA

Table nine in the following page lists the particular NTMs faced by the Bangladeshi exporters in the selected destination for HS chapters 1 to 97.

Table 9: NTMs faced by the exports from Bangladesh at the selected destinations

HS Code	EU+UK	China	India	US	Japan	Brazil
01	A12, A14, A15, A19, A21, A22, A64, A82, A83, A84, B31, B33, E1, G11	A11, A14, A19, A22, A33, A62, A69, A82, A83, A84, A851, A86, B19, B31, B7, B82, B83, B84, B851, B89, C3, E1, F69, P13, P14, P15, P163, P169, P19, P31, P32, P33, P39, P4, P9	A14A69, A82, A83, A84, A851, A859, A86, A89, B19, B32, B42, B83, B859, C3, E1, E111, P13, P15, P162, P163, P33, P4, P7, P9	A11, A12, A13, A14, A15, A31, A33, A42, A62, A63, A64, A8, A81, A83, A84, A85, A852, A59, A86, A89, B31, B32, B42, B6, B83, B84, B9, C3, C9, E1, E32, F61, F65, F69, P13, P15, P161, P162, P163, P19, P21, P33, P6, P9	A11, A12, A31, A33, A41, A59, A62, A64, A83, A85, A86, A9, E1, P13, P163, P169, P33	A11, A13, A14, A15, A42, A49, A51, A82, A83, A84, A85, A851, A86, A9, B14, B15, B31, B81, B82, B83, B84, B9, E1, E129, E329, P162, P163, P19, P39
02	A4, A12, A14, A21, A31, A63, A82, A83, A84, A85, A64, B31, E1, E125, E32, G11	A11, A14, A19, A21, A31, A33, A41, A51, A63, A64, A82, A84, A851, A852, A853, B21, B22, B31, B32, B33, B49, B7, B83, B84, B851, B853, B89, C3, C4, E1, F61, F69, P13, P14, P15, P161, P162, P163, P169, P19, P31, P32, P33, P39, P4, P9	A14, A15, A19, A21, A22, A31, A33, A41, A42, A49, A52, A53, A64, A69, A82, A83, A84, B19, B31, B32, B42, B7, B859, B9, C9, E1, E111, F61, F65, P13, P14, P15, P161, P162, P163, P169, P19, P31, P33, P4, P7, P9	A12, A13, A14, A15, A21, A22, A31, A32, A33, A41, A42, A63, A64, A8, A83, A84, A85, A851, A852, B21, B31, B33, B6, B7, E1, F61, F65, P15, P163, P169, P33, P6, P9	A11, A21, A31, A33, A41, A42, A49, A51, A59, A62, A64, A83, A85, A86, B31, E1, P13, P163, P169, P33	A11, A13, A14, A15, A22, A31, A33, A42, A49, A51, A82, A83, A84, A85, A851, A89, B14, B31, B32, B33, B7, B82, B83, B84, C4, E1, E111, E329, E611, E621, P162, P163, P169, P19, P31, P33, P39

HS Code	EU+UK	China	India	US	Japan	Brazil
03	A12, A14, A21, A22, A31, A32, A33, A4, A41, A63, A64, A82, A83, A84, A85, B31, B32, B33, B83, C4, E1, E125, E32	A14, A15, A19, A31, A33, A41, A63, A64, A69, A82, A83, A84, B21, B22, B31, B32, B33, B49, B7, B83, B84, B851, B853, B89, C3, E1, F61, F69, P13, P14, P15, P161, P162, P163, P169, P19, P33, P39, P4, P9	A14, A15, A19, A21, A22, A31, A33, A41, A42, A49, A52, A64, A69, A82, A83, A84, B19, B21, B22, B31, B32, B42, B7, B859, B9, C9, E1, E111, F61, F65, P13, P14, P15, P161, P162, P163, P169, P19, P33, P4, P7, P9	A13, A14, A15, A21, A22, A31, A33, A41, A42, A62, A63, A64, A8, A82, A83, A84, A851, A852, A89, A9, B21, B31, B32, B33, B41, B6, B7, B83, B84, B85, B9, C3, C9, E1, F61, P14, P15, P162, P169, P32, P33, P6, P9	A14, A21, A31, A41, A42, A62, A82, A83, A85, B31, B9, E1, E21, P13, P29, P33	A11, A13, A14, A15, A22, A31, A33, A42, A82, A83, A84, A86, A851, A89, B14, B15, B31, B32, B33, B7, B82, B83, B84, C4, E111, E129, E329, E611, E621, E622, P162, P163, P169, P19, P31, P33, P39
04	A12, A14, A21, A22, A31, A4, A63, A64, A82, A83, A84, A85, B31, B33, E1, E125, E32, G11	A11, A14, A19, A31, A33, A41, A63, A64, A82, A83, A84, A852, A86, B19, B21, B22, B31, B32, B33, B49, B7, B81, B82, B83, B84, B851, B852, B853, B89 C3, C4, E1, F61, F69, P13, P14, P15, P161, P162, P163, P169, P19, P33, P39, P4, P9	A14, A15, A19, A21, A22, A31, A33, A41, A42, A49, A53, A63, A64, A69, A82, A83, A84, B19, B31, B32, B33, B42, B6, B7, B82, B83, B859, B9, C9, E1, E111, E32, F61, F65, P13, P14, P15, P161, P162, P163, P31, P33, P4, P7, P9	A11, A12, A13, A14, A15, A21, A22, A31, A32, A33, A41, A42, A51, A62, A63, A64, A69, A82, A83, A84, A85, A851, A852, A9, B21, B31, B33, B42, B6, B7, B83, B84, E1, E611, F61, F65, P14, P15, P163, P169, P19, P32, P33, P6, P9	A11, A21, A31, A41, A42, A49, A64, A69, A83, A85, A859, A86, B21, B31, B33, B4, E1, E611, P163, P169, P19, P33	A11, A13, A14, A15, A21, A22, A31, A33, A41, A42, A82, A83, A84, A86, A851, A89, B14, B15, B31, B32, B33, B7, B82, B83, B84, E1, E129, E231, E329, P162, P163, P169, P19, P33, P39

HS Code	EU+UK	China	India	US	Japan	Brazil
05	A12, A21, A31, A4, A63, A82, A83, A84, A85, B31, E1, E125, E32	A11, A14, A19, A31, A33, A82, A83, A84, A86, B19, B21, B22, B31, B32, B33, B49, B7, B82, B83, B84, B851, B853, B89, C3, E1, E32, F61, F69, P14, P15, P161, P162, P163, P169, P31, P33, P39, P4, P9	A14, A15, A19, A21, A22, A31, A33, A41, A42, A49, A53, A64, A69, A82, A83, A84, B19, B31, B32, B33, B42, B82, B84, B859, B9, C1, C4, C9, E1, E111, E112, E32, F61, F65, P13, P162, P163, P33, P4, P7, P9	A13, A14, A15, A22, A31, A32, A33, A41, A42, A63, A64, A69, A83, A84, A851, A852, A9, B21, B31, B32, B33, B7, B84, C3, C9, E1, F61, F65, P15, P162, P169, P19, P33, P6, P9	A12, A21, A31, A41, A42, A49, A51, A64, A83, A85, A86, B42, B859, E1, F69, P13, P163, P169, P33, P4	A11, A13, A14, A15, A22, A42, A49, A51, A82, A83, A84, A86, A851, A89, B14, B15, B31, B32, B33, B49, B7, B81, B82, B83, B84, B9, E1, E129, E329, P162, P163, P169, P19, P33, P39
06	A15, A19, A83, A84, B31, B7, E1	A14, A82, A84, A86, B19, B83, B84, B851, B852, B853, B89, C3, E1, F69, P15, P162, P163, P169, P31, P33, P4, P9	A14, A31, A32, A33, A5, A51, A53, A64, A69, A8, A82, A83, A84, A86, B19, B42, B859, C3, E1, E111, F61, F65, F69, H29, P14, P163, P29, P33, P7, P9	A11, A12, A14, A31, A33, A51, A52, A53, A61, A69, A83, A84, A89, E1, F61, P169, P33, P6, P9	A41, A83, A86, C3, E1, P33	A14, A15, A33, A81, A82, A83, A84, A851, A86, B14, B15, B31, B7, B82, B84, E1, P11, P12, P162, P163, P19, P39
07	A12, A13, A14, A15, A19, A21, A22, A31, A32, A33, A41, A42, A63, A83, A84, A85, A851, A852, A853, B31, B32, B7, B84, E1, E125, G11	A14, A15, A19, A21, A31, A33, A59, A61, A63, A64, A82, A83, A84, A86, A89, B19, B21, B22, B31, B32, B33, B49, B7, B81, B82, B83, B84, B851, B852, B853, B89, C3, C4, E1, F61, P13, P14, P15, P161, P162, P163, P169, P19, P33, P39, P9	A13, A14, A15, A19, A21, A22, A31, A32, A33, A4, A41, A42, A49, A5, A52, A53, A59, A61, A64, A69, A8, A81, A82, A83, A84, A851, A859, A86, B19, B31, B32, B33, B7, B9, C3, C9, E111, F61, F65, F69, H29, P13, P14, P163, P31, P33, P4, P7, P9	A2, A13, A14, A15, A21, A22, A31, A33, A41, A42, A51, A53, A63, A64, A83, A84, A851, A852, A9, B21, B31, B33, B6, B7, F61, F62, P169, P33, P6, P9	A19, A21, A31, A41, A42, A83, A85, A86, B31, C3, E1, E611	A13, A14, A15, A22, A33, A41, A42, A51, A81, A82, A83, A84, A851, A86, A89, B14, B15, B31, B32, B33, B7, B82, B83, B84, C9, E1, E329, P162, P163, P19, P39

HS Code	EU+UK	China	India	US	Japan	Brazil
08	A12, A13, A14, A15, A19, A21, A22, A31, A33, A41, A42, A63, A83, A84, A85, A851, A852, A853, B31, B32, B7, B84, E1, E125	A14, A19, A21, A31, A33, A41, A63, A64, A69, A82, A83, A84, A86, B19, B21, B22, B31, B32, B33, B42, B49, B7, B81, B82, B83, B84, B852, B853, B859, B89 C3, E1, F61, P13, P14, P15, P161, P162, P163, P169, P19, P31, P32, P33, P39, P9	A11, A14, A15, A19, A21, A22, A31, A33, A4, A41, A42, A49, A5, A52, A53, A64, A69, A8, A82, A83, A84, A86, B19, B31, B32, B7, B9, C3, C9, E111, F11, F61, F65, H29, P13, P14, P15, P162, P163, P33, P4, P7, P9	A11, A12, A13, A14, A15, A21, A22, A31, A33, A41, A42, A51, A53, A61, A63, A64, A69, A82, A83, A84, A85, A851, A852, A9, B21, B31, B33, B7, F61, F62, P13, P15, P169, P33, P6, P9	A19, A21, A31, A41, A42, A83, A85, A86, B31, C3, E1	A11, A13, A14, A15, A22, A31, A33, A41, A42, A82, A83, A84, A851, A86, A89, A9, B14, B31, B32, B33, B7, B82, B83, B84, C9, E1, E329, P162, P163, P19, P39
09	A12, A13, A14, A15, A19, A21, A22, A31, A33, A41, A42, A63, A83, A84, A85, A851, A852, A853, B31, B32, B7, B84, E1, E125	A14, A19, A31, A33, A82, A84, A853, A86, B19, B21, B22, B31, B32, B33, B42, B49, B7, B81, B82, B83, B84, B851, B852, B853, B859, B89, C3, E1, F61, P14, P15, P162, P163, P169, P19, P31, P32, P39, P9	A14, A15, A19, A21, A22, A31, A33, A4, A41, A42, A49, A5, A52, A53, A61, A64, A69, A8, A81, A82, A83, A84, A851, A859, B19, B31, B32, B33, B7, B851, B9, C3, C9, E111, F61, F65, H29, P13, P14, P15, P162, P163, P19, P33, P4, P7, P9	A12, A13, A14, A15, A21, A22, A31, A33, A41, A42, A51, A53, A63, A64, A83, A84, A851, A852, B21, B31, B33, B6, B7, C3, F61, P169, P33, P6, P9	A21, A31, A41, A42, A83, A85, A86, B31, C3	A13, A14, A15, A22, A33, A41, A42, A51, A69, A81, A82, A83, A84, A851, A86, A89, A9, B14, B15, B31, B32, B33, B7, B82, B83, B84, C9, E1, E329, P162, P163, P19, P39

HS Code	EU+UK	China	India	US	Japan	Brazil
10	A12, A13, A14, A15, A19.A21.A22.A31.A32, A33, A41, A42, A63, A83, A84, A85, A851, A852, A853, B31, B7, E1, E125, G11	A14, A15, A19, A21, A31, A33, A41, A49, A59, A63, A64, A82, A83, A84, A86, A89	A13, A14, A15, A19, A21, A22, A31, A32, A33, A41, A42, A5, A52, A53, A61, A64, A69, A8, A81, A82, A83, A84, A851, A859, A86, B19, B31, B32, B33, B7, B9, C1, C3, C9, E111, E119, F61, F65, F69, H11, H29, P13, P14, P162, P163, P33, P4, P7, P9	A12, A13, A14, A15, A21, A22, A31, A33, A41, A42, A51, A53, A63, A64, A83, A84, A851, A852, A9, B21, B31, B33, B7, F61, P162, P163, P169, P33, P6, P9	A19, A21, A31, A41, A42, A83, A85, A86, B31, B7, B84, B851, C3, E611	A11, A14, A15, A22, A31, A33, A42, A51, A81, A82, A83, A84, A851, A86, A89, B14, B15, B31, B7, B82, B84, C9, E1, E6, P162, P163, P19, P39
11	A12, A13, A14, A15, A19, A21, A22, A31, A32, A33, A41, A42, A63, A85, A851, A852, A853, B31, B33, B84, E1, E125, E32	A14, A19, A31, A33, A63, A82, A83, A84, A86, B21, B22, B31, B32, B33, B49, B7, B81, B82, B83, B84, B851, B852, B853, B89, E1, E611, F61, H19, P14, P15, P162, P163, P169, P19, P31, P32, P33, P39, P9	A14, A15, A19, A21, A22, A31, A33, A4, A41, A42, A49, A5, A64, A69, A8, A82, A83, A84, B19, B31, B32, B7, B83, B9, C3, C9, E111, F61, F65, P13, P14, P162, P163, P33, P4, P7	A13, A15, A22, A31, A33, A41, A42, A63, A64, A82, A851, A852, B21, B31, B33, B6, B7 F61, P169, P33, P6, P9	A21, A31, A41, A42, A85, B31, B33, B41, B49, B7, B84, B85, B851, B859, B89, E1, E611, F65, F69, F9, P19	A13, A14, A15, A22, A33, A41, A82, A83, A84, A851, A86, A89, A9, B14, B31, B32, B33, B7, B82, B83, B84, E1, E329, P162, P163, P19, P39

HS Code	EU+UK	China	India	US	Japan	Brazil
12	A12, A13, A14, A15, A19, A21, A22, A31, A32, A33, A41, A42, A63, A83, A84, A85, A851, A852, A853, B21, B31, B32, B33, B7, B81, B83, B84, E1, E125, E32	A14, A15, A19, A21, A31, A33, A41, A49, A59, A61, A63, A64, A82, A83, A84, A851, A852, A853, A86, A89, B19, B21, B22, B31, B32, B33, B42, B49, B7, B81, B82, B83, B84, B851, B852, B853, B859, B89, C3, C4, E1, E32, F61, F69, P13, P14, P15, P161, P162, P163, P169, P19, P31, P32, P33, P39, P4, P9	A13, A14, A15, A19, A21, A22, A31, A32, A33, A41, A42, A49, A5, A53, A61, A64, A69, A8, A81, A82, A83, A84, A851, A859, A86, B19, B31, B32, B42, B7, B83, B84, B859, B9, C1, C3, C9, E1, E111, E119, E32, E329, F61, F65, F69, H11, H29, P12, P13, P14, P162, P163, P19, P29, P3, P31, P33, P4, P7, P9	A12, A13, A14, A15, A21, A22, A31, A33, A41, A42, A5, A51, A53, A63, A64, A82, A83, A84, A85, A851, A852, A89, A9, B19, B21, B22, B31, B32, B33, B42, B7, B82, B83, B85, B89, C3, C9, E1, F61, F69, P15, P162, P163, P169, P33, P6, P9	A21, A31, A41, A42, A51, A62, A83, A85, A86, B19, B31, B33, B42, B49, B85, B853, B859, C3, C4, E1, E21, E611, F61, F65, F69, P11, P13, P15, P163, P29, P33, P4, P9	A11, A13, A14, A15, A19, A22, A31, A33, A41, A42, A51, A69, A81, A82, A83, A84, A851, A86, A89, B14, B15, B31, B32, B33, B42, B7, B82, B83, B84, B9, C9, E1, E329, P11, P12, P162, P163, P19, P39
13	A13, A15, A19, A21, A22, A31, A32, A33, A41, A42, A63, A85, A851, A852, A853, B31, B33, B81, B82, B84, E1, E125, E32	A14, A19, A31, A33, A41, A63, A64, A82, A84, A851, A852, A853, A86, B19, B21, B22, B31, B32, B33, B42, B49, B7, B82, B83, B84, B851, B852, B853, B859, B89, C3, E1, E32, F61, F69, P14, P15, P161, P162, P163, P169, P31, P32, P33, P39, P4, P9	A14, A15, A19, A21, A22, A31, A33, A41, A42, A49, A5, A64, A69, A8, A82, A83, A84, B19, B31, B32, B42, B83, B84, B859, B89, B9, C3, C9, E1, E111, E112, E32, E329, F61, F65, F9, H11, H19, P13, P15, P163, P3, P31, P33, P4, P51, P7, P9	A13, A14, A15, A22, A31, A33, A41, A42, A53, A63, A64, A83, A84, A851, A852, A9, B21, B22, B31, B32, B33, B42, B6, B7, B82, B83, B85, B89, C3, C9, E1, F61, F69, P15, P33, P6, P9	A11, A21, A31, A41, A42, A85, B19, B31, B859, E1, H11, P33, P9	A13, A14, A15, A22, A33, A82, A83, A84, A851, A86, B14, B15, B31, B32, B33, B42, B7, B82, B83, B84, E1, E329, P11, P12, P162, P163, P19, P39

HS Code	EU+UK	China	India	US	Japan	Brazil
14	A12, A13, A14, A15, A19, A21, A22, A31, A33, A41, A42, A63A83, A84, A851, A852, A853, B31, E1, E125	A14, A31, A33, A64, A82, A84, A851, A852, A853, A86, B19, B21, B22, B31, B32, B33, B42, B49, B7, B82, B83, B84, B852, B853, B859, B89, C3, E1, P14, P15, P161, P162, P163, P169, P33, P39	A14, A15, A31, A33, A42, A5, A64, A8, A82, A83, A84, B31, C3, E111, F61, F65, P13, P33, P4	A12, A14, A82, A89, F61, P169, P33, P6, P9	A11, A31, A41, A83, A85, A86, B31, C3	A14, A15, A33, A82, A83, A84, A851, A86, B14, B31, B7, B82, B83, B84, E1, P162, E163, E39
15	A12, A13, A15, A19, A22, A31, A32, A33, A4, A41, A42, A6, A63, A82, A83, A84, A85, A851, A852, A853, B31, B33, B82, B84, E1, E125, E32	A11, A14, A15, A19, A31, A33, A41, A49, A63, A64, A82, A83, A84, A851, A86, B19, B21, B22, B31, B32, B33, B42, B49, B7, B81, B82, B83, B84, B851, B852, B853, B859, B89, C1, C2, C3, C4, C9, E1, E32, F61, F69, P14, P15, P161, P162, P163, P169, P31, P33, P39, P4, P9	A14, A15, A19, A21, A22, A31, A33, A41, A42, A49, A5, A53, A63, A64, A69, A8, A82, A83, A84, B19, B21, B22, B31, B32, B33, B42, B6, B7, B82, B859, B9, C3, C9, E1, E111, F61, F65, H11, P13, P14, P15, P161, P162, P163, P169, P19, P33, P4, P7, P9	A13, A14, A15, A21, A22, A31, A33, A41, A42, A63, A64, A8, A83, A851, A852, A9, B21, B31, B32, B33, B41, B42, B6, B7, B83, C9, E1, F61, F69, P15, P169, P32, P33, P6, P9	A21, A22, A31, A41, A42, A64, A83, A85, A86, B31, B33, B41, B42, B49, B7, B85, B859, B89, C4, E1, F61, F65, F69, P163, P169, P19, P33, P4, P9	A13, A14, A15, A22, A33, A41, A42, A82, A83, A84, A851, A89, B14, B31, B32, B33, B4, B7, B82, B83, B84, B9, E1, E329, P162, P163, P19, P39

HS Code	EU+UK	China	India	US	Japan	Brazil
16	A12, A21, A31, A33, A4, A41, A63, A82, A83, A84, A85, B31, B33, B6, C4, E1, E125, E32, G11	A11, A14, A19, A31, A33, A63, A64, A82, A83, A84, A85, A853, A86, B21, B22, B31, B32, B33, B49, B7, B83, B84, B851, B852, B853, B89, C3, E1, F61, F69, P13, P14, P15, P161, P162, P163, P169, P19, P33, P39, P4, P9	A14, A15, A19, A21, A22, A31, A33, A41, A42, A49, A64, A69, A8, A82, A83, A84, B19, B21, B31, B32, B42, B83, B859, B9, C9, E1, E111, F61, F65, P13, P14, P15, P161, P162, P163, P169, P19, P33, P4, P7, P9	A12, A13, A14, A15, A21, A22, A31, A32, A33, A41, A42, A51, A63, A64, A69, A8, A83, A84, A85, A851, A852, A9, B21, B31, B33, B41, B6, B7, B82, B83, B85, E1, F61, F65, P15, P163, P169, P33, P6, P9	A11, A21, A31, A41, A42, A49, A51, A64, A82, A83, A85, A86, B31, E1, P163, P169, P33	A13, A14, A15, A22, A33, A41, A42, A49, A51, A82, A83, A84, A851, B14, B31, B32, B33, B7, B82, B83, B84, E1, E329, P162, P163, P19, P39
17	A12, A13, A15, A19, A21, A22, A31, A32, A33, A4, A41, A42, A63, A82, A83, A84, A85, A851, A852, A853, B31, B33, B84, E1, E125, E32, G11	A14, A15, A19, A31, A33, A41, A63, A82, A83, A84, A851, A852, A853, A86, B21, B22, B31, B32, B33, B42, B49, B7, B81, B82, B83, B84, B851, B852, B853, B89, C1, C9, E1, E621, F61, P14, P15, P161, P162, P163, P169, P19, P39, P9	A14, A15, A19, A21, A22, A31, A33, A41, A42, A49, A5, A63, A64, A69, A8, A82, A83, A84, B19, B31, B32, B7, B9, C3, C4, C9, E111, F61, F65, P13, P15, P161, P162, P163, P33, P4	A13, A14, A15, A22, A31, A33, A41, A42, A63, A64, A82, A83, A851, A852, A9, B21, B31, B33, B6, B7, F61, P169, P33, P6, P9	A11, A21, A31, A41, A42, A85, B31, B33, B41, B49, B7, B85, B859, B89, C4, E1, F65, F69, F9, P19, P4, P9	A13, A14, A15, A22, A33, A41, A82, A83, A84, A851, A86, A89, B14, B31, B32, B33, B7, B82, B83, B84, C9, E1, E329, E211, E321, P162, P163, P19, P39
18	A12, A13, A14, A15, A21, A22, A31, A33, A41, A42, A63, A85, A851, A852, A853, B31, E1, E125	A14, A19, A31, A33, A63, A82, A83, A84, A86, B21, B22, B31, B32, B33, B49, B7, B83, B84, B853, B89, E1, F61, P14, P15, P162, P163, P169, P39, P9	A14, A15, A19, A21, A22, A31, A33, A4, A41, A42, A49, A5, A64, A69, A8, A82, A83, A84, B19, B31, B32, B7, B9, C3, C9, E111, F61, F65, P13, P33, P4, P9	A13, A15, A22, A31, A33, A41, A42, A51, A53, A63, A64, A82, A851, A852, A9, B21, B31, B33, B7, F61, P169, P33, P6, P9	A21, A31, A41, A42, A85, B31, B32, B41, B42, B49, B7, B85, B859, B89, C4, E1, E611, F61, F65, F69, P19, P33, P4, P9	A13, A14, A15, A22, A31, A33, A41, A82, A83, A84, A851, A86, A89, B14, B31, B32, B33, B7, B82, B83, B84, C9, E1,

HS Code	EU+UK	China	India	US	Japan	Brazil
						E329, E321, P162, P163, P19, P39
19	A12, A13, A15, A21, A22, A31, A33, A4, A41, A42, A63, A82, A83, A84, A85, A851, A852, A853, B31, E1, E125	A14, A19, A31, A33, A63, A82, A83, A84, A86, B21, B22, B31, B32, B33, B49, B7, B82, B83, B84, B853, B89, C4, E1, F61, P14, P15, P162, P163, P169, P39, P9	A14, A15, A19, A21, A22, A31, A33, A41, A42, A49, A5, A63, A64, A69, A8, A82, A83, A84, B19, B21, B22, B31, B32, B33, B7, B82, B83, B9, C3, C9, E111, F61, F65, P13, P162, P163, P19, P33, P4	A13, A15, A21, A22, A31, A33, A41, A42, A63, A64, A8, A82, A851, A852, A9, B21, B31, B33, B6, B7, F61, P169, P33, P6, P9	A21, A31, A41, A42, A82, A85, B21, B31, B49, B7, B84, B851, B859, B89, C4, E1, E611, F65, F69	A13, A14, A15, A22, A33, A41, A81, A82, A83, A84, A851, A852, A86, A89, , B14, B31, B32, B33, B7, B82, B83, B84, E1, E329, P162, P163, P19, P39
20	A12, A13, A15, A21, A22, A31, A33, A41, A42, A63, A82, A83, A85, A851, A852, A853, B31, E1, E125, G11	A14, A19, A31, A33, A41, A63, A64, A82, A83, A84, A86, B21, B22, B31, B32, B33, B49, B7, B83, B84, B853, B89, E1, F61, P14, P15, P162, P163, P169, P39, P9	A15, A19, A21, A22, A31, A33, A41, A42, A49, A53, A64, A69, A82, A83, A84, B19, B31, B32, B33, B6, B7, B83, B9, C9, E111, F61, F65, P13, P162, P163, P33, P4	A13, A15, A22, A31, A33, A41, A42, A51, A63, A64, A69, A8, A82, A84, A851, A852, A9, B21, B31, B33, B6, B7, B82, F61, P169, P33, P6, P9	A21, A31, A41, A42, A82, A85, B31, E611	A13, A14, A15, A21, A22, A33, A41, A81, A82, A83, A84, A851, A852, A86, A89, B14, B15, B31, B32, B33, B7, B81, B82, B83, B84, B9, E1, E329, P162, E163, E19, E39
21	A12, A13, A15, A21, A22, A31, A33, A4, A41, A42, A63, A82, A83, A84, A85, A851, A852, A853, B31, B33, B84, E1, E125, E32	A14, A19, A31, A33, A82, A83, A84, A852, A86, B19, B21, B22, B31, B32, B33, B42, B49, B7, B82, B83, B84, B852, B853, B859, B89, E1, F61, P14, P15, P162, P163, P169, P39, P9	A14, A15, A19, A21, A22, A31, A33, A41, A42, A49, A53, A63, A64, A69, A8, A82, A83, A84, B19, B21, B22, B31, B32, B33, B7, B83, B9, C3, C9, E111, F61, F65, P13, P15, P161, P162, P163, P19, P33, P4	A13, A15, A22, A31, A33, A41, A42, A63, A64, A8, A82, A851, A9, B21, B31, B33, B6, B7, E1, F61, P169, P32, P33, P6, P9	A11, A21, A31, A41, A42, A69, A82, A85, A859, B21, B31, B33, B41, B49, B7, B85, B859, B89, C4, E1, E611, F65, F69, P19, P4, P9	A13, A14, A15, A22, A31, A33, A33, A41, A69, A82, A83, A84, A851, A86, A89, B14, B31, B32, B33, B7, B82, B83, B84, E1, E329, P162, P163, P19, P39

HS Code	EU+UK	China	India	US	Japan	Brazil
22	A13, A15, A21, A22, A31, A33, A41, A42, A63, A83, A85, A851, A852, A853, B31, B33, B84, E1, E125, E32, G11	A14, A19, A31, A33, A41, A63, A64, A82, A83, A84, A851, A852, A853, A86, B21, B22, B31, B32, B33, B41, B42, B49, B6, B7, B83, B84, B851, B853, B89, C1, E1, F61, F71, P14, P15, P161, P162, P163, P169, P39, P9	A15, A19, A21, A22, A31, A33, A41, A42, A49, A64, A69, A82, A83, B19, B31, B32, B33, B89, B9, C9, E111, F61, F65, F9, P13, P33, P4	A13, A15, A22, A31, A33, A41, A42, A63, A64, A82, A851, A852, A9, B21, B22, B31, B32, B33, B42, B6, B7, B82, B83, B85, B859, C9, E1, E111, F61, F69, F72, P15, P162, P169, P29, P33, P6, P9	A11, A21, A31, A41, A42, A85, B31, B33, B41, B42, B49, B7, B85, B859, B89, C4, E1, F65, F69, F72, G9, P19, P4, P9	A13, A14, A15, A22, A41, A81, A82, A83, A84, A851, A852, A89, B14, B15, B31, B32, B33, B7, B81, B83, B84, B9, E1, E311, E329, P162, P163, P19, P39
23	A12, A13, A15, A19, A21, A22, A31, A32, A33, A4, A41, A42, A63, A83, A84, A85, A852, A853, B31, E1, E32, G11	A14, A15, A19, A22, A31, A49, A81, A82, A83, A84, A851, A86, B21, B22, B31, B33, B7, B81, B82, B83, B84, B851, B852, B853, B89, C4, F69, P13, P14, P15, P161, P162, P163, P169, P19, P39	A14, A33, A5, A64, A8, A83, A84, C3, E111, F65, P12, P13, P14, P15, P161, P162, P163, P169, P19, P4	A13, A14, A21, A22, A31, A42, A51, A63, A89, B31, B32, B33, B42, B83, C9, E1, F61, F69, P33, P6, P9	A21, A22, A31, A41, A42, A63, A64, A82, A83, A85, A851, A86, B31, B42, B49, C4, E1, F61, P163, P169, P33, P4, P9	A11, A14, A15, AA49, A81, A82, A83, A84, A851, A89, B14, B31, B7, B82, B84, B9, E1, E111, P162, P163, P19, P39
24	B22, B31, B33, B7, B82, B85, E1, E32	A14, A82, A84, A86, B31, B33, B42, B6, B7, B82, B83, B84, B89, C3, C4, E1, E111, F71, P162, P169, P33, P51	A14, A33, A5, A64, A8, A83, A84, B22, B31, B853, C3, E1, E111, F65, F69, P162, P163, P169, P33, P4, P9	B31, B84, B85, B851, B853, C3, C9, E1, F61, F72, F79, P15, P169, P33, P6, P9	B31, E1, F72, F73, G9	A14, A15, A82, A83, A84, A851, A86, B14, B15, B31, B33, , B81, B82, B84, E1, P162, P163, P19, P39

HS Code	EU+UK	China	India	US	Japan	Brazil
25	A15, A19, A83, A84, B31, B33, B42, B6, B7, B83, B84, B85, B851, E1, E125, E32	A14, A19, A31, A33, A49, A83, A84, A851, A86, B19, B21, B22, B31, B32, B33, B41, B42, B49, B6, B7, B81, B82, B83, B84, B851, B852, B853, B89, C1, C4, C9, E1, E32, F61, F71, P14, P15, P162, P163, P169, P19, P31, P32, P33, P39, P59, P9	A14, A15, A19, A21, A22, A31, A33, A41, A42, A49, A53, A63, A64, A69, A8, A82, A83, B19, B21, B22, B31, B32, B33, B42, B7, B82, B84, B859, B9, C1, C3, C4, C9, E1, E112, E32, F61, F65, H29, P13, P163, P29, P33, P4, P9	A13, A15, A22, A31, A33, A41, A42, A51, A63, A64, A851, A852, A9, B21, B31, B32, B33, B42, B7, B82, B83, B85, B852, C9, E1, F69, P169	A21, A31, A41, A42, A85, B31, B32, B33, B41, B42, B49, B7, B85, B859, B89, C4, E1, E32, F61, F65, F69, P13, P169, P19, P33, P4, P9	A14, A81, A82, A84, A852, B14, B22, B31, B33, B7, B81, B82, B84, E1, E129
26	B31, B33, B42, B84, B85, E1, E125, E32, H11	A49, A83, A83, A84, A851, A86, B31, B33, B41, B42, B6, B7, B81, B83, B84, B851, B89, C1, C4, C9, E1, E32, F71, P14, P162, P163, P169, P19, P32, P33, P39, P51, P59, P9	B31, B32, B33, B42, B82, B83, B84, B859, B9, C1, C4, C9, E1, E112, E32, F65, P13, P163, P29, P31, P33, P4, P7, P9	B31, B32, B33, B42, B82, B83, B85, C9, E1, F65, F69	B19, B32, B42, B49, B859, C4, E1, F61, F69, P13, P169, P33, P4, P9	A14, A82, A84, B14, B21, B31, B82, B84, E1, E129, E329, H11

HS Code	EU+UK	China	India	US	Japan	Brazil
27	A15, A19, A83, A84, B31, B33, B7, B83, B84, B85, B851, E1, E125, E32	A31, A49, A83, A84, A851, A86, B19, B21, B22, B31, B32, B33, B41, B42, B49, B6, B7, B81, B82, B83, B84, B851, B852, B853, B89, C1, C4, C9, E1, E111, E211, E32, F71, F73, G9, H11, H19, P14, P161, P162, P163, P169, P19, P22, P32, P33, P39, P51	A14, A51, A69, A83, B19, B31, B33, B42, B49, B82, B83, B84, B859, B89, C1, C3, C4, C9, E1, E112, E32, F61, F65, F9, H11, P163, P29, P31, P33, P51, P9	B22, B31, B42, B7, B82, B83, B84, B85, B852, E1, P169, P19, P32, P33, P39, P6	A22, A41, A85, B22, B31, B32, B33, B41, B42, B49, B7, B82, B85, B853, B859, B89, C4, E1, F61, F65, F69, F72, F73, G9, P13, P169, P19, P33, P4, P9	A14, A82, A83, A84, B14, B15, B22, B31, B7, B81, B82, B83, B84, B9, E1, E111, E329, F71, H11, P19
28	A12, A21, A4, A42, A63, A82, A83, A84, A85, B19, B31, B33, B42, B6, B7, B83, B84, B85, B851, E1, E112, E125, E32, H11, P162, P163	A14, A15, A19, A31, A33, A64, A82, A83, A84, A851, A852, A853, A86, B21, B22, B31, B32, B33, B41, B42, B49, B6, B7, B81, B82, B83, B84, B851, B852, B853, B859, B89, C1, C4, C9, E1, E111, E119, E32, F69, F71, G32, H11, H19, H29, P13, P14, P15, P161, P162, P163, P169, P19, P31, P32, P33, P39, P51, P59, P9	A15, A31, A33, A42, A53, A64, A82, A83, B19, B21, B22, B31, B32, B33, B42, B7, B81, B82, B83, B84, B851, B853, B859, B89, C1, C3, C4, C9, E1, E11, E32, E329, F61, F65, F9, P12, P13, P14, P15, P162, P163, P19, P29, P3, P31, P33, P4, P51, P7, P9	A31, B22, B31, B32, B33, B42, B6, B82, B84, B85, B852, B9, C4E1, E32, F65, P13, P15, P161, P162, P169, P29, P39, P43, P9	A11, A22, A31, A41, A63, A64, A85, A851, B19, B31, B32, B33, B41, B42, B49, B7, B82, B85, B853, B859, B89, C4, E1, F65, F69, P13, P169, P19, P29, P33, P4, P9	A13, A14, A81, A82, A84, B14, B15, B22, B31, B32, B33, B41, B42, B7, B81, B82, B83, B84, C3, E1, E129, E231, E329, E611, E621, H11, P11, P12, P19

HS Code	EU+UK	China	India	US	Japan	Brazil
29	A42, B19, B31, B33, B42, B6, B83, B84, B85, B851, E1, E112, E125, E32, E162, E163	A14, A15, A19, A31, A33, A64, A82, A83, A84, A851, A852, A853, A86, A89, B21, B22, B31, B32, B33, B42, B49, B6, B7, B81, B82, B83, B84, B851, B852, B853, B89, C1, C3, E1, E211, E32, F69, H19, H29, P13, P14, P15, P161, P162, P163, P169, P19, P31, P32, P33, P39, P51, P59, P9	A15, A22, A33, A42, A53, A64, A82, A83, B19, B22, B31, B33, B42, B7, B82, B83, B84, B859, B89, C3, C9, E1, E111, E112, E32, E329, F61, F65, F9, H11, P12, P13, P14, P15, P162, P163, P19, P22, P29, P3, P31, P33, P4, P51, P7, P9	A31, B19, B22, B31, B33, B42, B6, B82, B83, B85, B852, C4, E1, E211, E32, P15, P169, P29, P32, P33, P9	A11, A22, A31, A41, A63, A64, A82, A85, A851, B19, B21, B22, B31, B32, B33, B41, B42, B49, B7, B82, B85, B853, B859, C4, E1, E32, F65, F69, P11, P13, P15, P163, P169, P19, P29, P31, P33, P4, P9	A11, A13, A14, A81, A82, A84, B14, B15, B22, B31, B32, B33, B41, B42, B49, BB7, B81, B82, B83, B84, C3, E1, E111, E129, E231, E329, E6, H11, P11, P12, P19
30	A12, A21, A4, A42, A63, A82, A83, A84, A85, B31, B33, B7, B81, B82, B83, B84, C4, E1, E112, E32, P162, P163	A11, A14, A31, A49, A83, A84, A851, A86, B19, B22, B31, B32, B33, B41, B42, B7, B81, B82, B83, B84, B85, B851, B852, B853, B89, C1, C3, C4, C9, E1, E119, E32, F61, F69, H19, H29, P13, P14, P15, P162, P163, P169, P19, P31, P32, P33, P39, P4, P59, P9	A14, A31, B19, B21, B22, B31, B33, B41, B42, B7, B82, B83, B84, B853, B859, C1, C3, C4, C9, E1, E112, E32, E329, F61, F65, F9, P15, P162, P163, P29, P3, P31, P33, P51, P7, P9	A14, A31, A33, A64, A852, B22, B31, B32, B33, B41, B42, B49, B6, B7, B8, B82, B83, B84, B85, B851, B859, B89, B9, C9, E1, F61, F69, P15, P161, P169, P33, P6, P9	A14, A19, B21, B22, B31, B33, B41, B42, B49, B7, B82, B83, B85, B853, B859, B89, C4, E1, E32, F61, F65, F69, P13, P169, P19, P29, P33, P4, P9	A11, A13, A14, A82, A83, A84, B14, B15, B31, B32, B33, B41, B7, B81, B82, B83, B84, B9, E1, E329, P11, P12, P19, P31

HS Code	EU+UK	China	India	US	Japan	Brazil
31	A12, A15, A19, A21, A4, A63, A83, A84, A85, AB31, B33, B42, B6, B83, B84, B85, B851, E1, E125, E32	A14, A15, A19, A31, A33, A64, A82, A83, A84, A851, A852, A853, A86, B21, B22, B31, B32, B33, B41, B42, B49, B6, B7, B81, B82, B83, B84, B851, B852, B853, B89, C1, C4, E1, E111, E621, F69, F71, H11, H19, H29, P13, P14, P15, P161, P162, P163, P169, P19, P33, P39	A14, A15, A31, A33, A42, A5, A64, A8, A82, A83, A84, B21, B22, , B31, B32, B33, B42, B7, B81, B82, B83, B85, B859, B89, C3, C4, C9, E1, E11, E111, E32, F61, F65, F9, H11, H29, P12, P13, P14, P15, P162, P163, P19, P31, P33, P4, P9	B31, B32, B33, B42, B83, B85, C9, E1, F61, F69, P6	A11, A22, A31, A41, A63, A64, A85, A851, B21, B31, B33, B42, B49, B7, B82, B853, B859, C4, E1, F61, P33, P4, P9	A1, A14, A15, A82, A84, A851, B14, B15, B21, B22, B31, B33, B7, B81, B82, B83, B84, E1, P162, P163, P19, P39
32	A42, B31, B33, B7, B83, B7, B83, B84, B85, E1, E125, E32, P162, P163	A14, A31, A33, A64, A82, A84, A851, A852, A853, A86, B19, B21, B22, B31, B32, B33, B42, B49, B7, B81, B82, B83, B84, B851, B852, B853, B859, B89, E1, E32, P14, P15, P161, P162, P163, P169, P19, P31, P33, P39	A15, A31, A33, A42, A64, A82, A83, B19, B22, B31, B33, B42, B82, B84, B859, C1, C4, C9, E1, E112, E32, E329, F61, F65, P13, P15, P163, P3, P31, P33, P4, P9	B22, B31, B32, B82, B85, F61, P32, P6	A11, A22, A31, A41, A85, B31, B32, B33, B41, B42, B49, B7, B85, B859, B89, C4, E1, F65, F69, P13, P169, P19, P33, P4, P9	A13, A14, A82, A83, A84, A89, B14, B31, B32, B33, B7, B82, B83, B84, C4, E1, E111, E329, E611, E621, P19, P31

HS Code	EU+UK	China	India	US	Japan	Brazil
33	B22, B31, B33, B84, E1, E32	A14, A31, A82, A84, A851, A852, A853, A86, B19, B21, B22, B31, B33, B42, B7, B82, B83, B84, B851, B852, B853, B859, B89, C3, E1, F61, F69, F71, P14, P15, P161, P162, P163, P169, P31, P33, P4, P9	B19, B21, B22, B31, B41, B42, B7, B81, B859, B89, C3, C4, C9, E1, E111, F9, P163, P33, P7, P9	A31, B22, B31, B32, B33, B42, B6, B7, B82, B83, B85, C9, E1, F61, F69, P169, P32, P33, P6, P9	B21, B22, B31, B33, B41, B49, B7, B85, B859, B89, C4, E1, F65, F69, P19, P33, P9	A13, A14, A41, A81, A82, A84, A852, A89, B14, B15, B21, B22, B31, B32, B41, B49, B7, B81, B82, B83, B84, E1, E329, P19
34	A42, B22, B31, B33, B7, B81, B82, B83, B84, B85, C4, E1, E125, E32, P162, P163	A31, A84, A851, A852, A853, A86, B19, B22, B31, B32, B33, B42, B7, B82, B83, B84, B851, B852, B853, B89, E1, F61, P14, P15, P161, P162, P163, P169, P9	B21, B22, B31, B32, B33, B41, B42, B7, B81, B82, B83, B89, B9, C3, C4, C9, E1, F61, F65	B31, B32, B33, B42, B82, B83, B85, C9, E1, F65, F69, P32	A31, A82, A85, B21, B22, B31, B32, B33, B41, B42, B49, B7, B85, B859, B89, C4, E1, F65, F69, P19, P33, P4, P9	A13, A14, A82, A84, B14, B15, B22, B31, B32, B33, B41, B49, B7, B81, B82, B83, B84, E1, E111, E329, P19
35	A12, A13, A15, A19, A21, A22, A31, A32, A33, A4, A41, A42, A63, A82, A83, A84, A85, A851, A852, A853, B31, B33, B7, B83, B84, B85, E1, E125, E32	A11, A14, A19, A31, A33, A82, A83, A84, A86, B19, B21, B22, B31, B32, B33, B49, B7, B81, B82, B83, B84, B851, B852, B853, B89, C3, E1, E32, F61, P13, P14, P15, P161, P162, P163, P169, P19, P33, P39, P9	A14, A15, A19, A21, A22, A31, A33, A41, A42, A49, A64, A69, A82, A83, A84, B19, B21, B22, B31, B32, B7, B9, C9, E111, F61, F65, P13, P15, P161, P162, 163, P19, P31, P33, P4	A13, A14, A15, A22, A31, A33, A41, A42, A63, A64, A8, A83A851, A852, A86, A9, B21, B31, B33, B42, B7, B83, B85, C9, E1, F61, F65, F69, P169, P33, P6, P9	A21, A22, A31, A41, A42, A85, B31, B33, B41, B49, B7, B85, B859, C4, E1, F65, F69, P19, P33, P4, P9	A13, A14, A15, A81, A82, A84, A851, A89, B14, B31, B32, B33, B7, B81, B82, B83, E1, E231, E329, P162, P163, P19, P39

HS Code	EU+UK	China	India	US	Japan	Brazil
36	B31, B33, B42, B7, B8, B83, B84, B85, B851, E1, E125, E32	A84, A86, B31, B33, B41, B42, B7, B81, B83, B84, B89, E1, E32, F71, P13, P15, P162, P163, P169, P31, P33, P39	B31, B32, B33, B42, B7, B81, B82, B83, B84, B859, C1, C4, C9, E1, E11, E112, E32, F61, F65, P15, P33, P4, P9	B22, B31, B32, B33, B42, B7, B82, B83, B84, B85, B853, B89, C9, E1, F65, F69, P169, P32	B33, B42, B49, B7, B82, B859, C4, E1, F69, P13, P169, P33, P4	B14, B7, B81, E1, E129, E329, P19
37	B31, B33, B7, B82, B83, B84, C4, E1, E125, E32	B31, B7, B81, B83, E1, E121, E321, E329, H19, P162, P169, P33, P39	B33, B42	B31, B32, B33, B42, B83, B85, C9, E1, F65, F69	B31, B33, B41, B42, B49, B7, B85, B859, B89, C4, E1, F65, F69, P19, P33, P4, P9	B14, B81, B83, B9, E1, P19
38	A12, A21, A4, A42, A63, A83, A84, A85, B19, B31, B33, B7, B81, B82, B83, B84, B85, B851, E1, E125, E32, P162, P163	A49, A82, A83, A84, A851, A86, B21, B22, B31, B32, B33, B41, B42, B6, B7, B81, B82, B83, B84, B851, B852, B853, B859, C1, C4, C9, E1, E211, E32, F71, H19, H29, I9, P13, P14, P15, P161, P162, P163, P169, P19, P32, P33, P39, P59, P6	A53, B19, B31, B33, B42, B7, B81, B82, B83, B84, B853, B859, B89, B9, C1, C3, C4, C9, E1, E111, E112, E32, F61, F65, F69, F9, P15, P162, P163, P22, P29, P31, P33, P51, P7, P9	A31, B31, B32, B6, B7, B82, B85, B9, E1, F61, P32, P33, P39, P6, P9	B31, B32, B33, B41, B42, B49, B7, B81, B83, B85, B853, B859, B89, C4, E1, E32, F61, F65, F69, F73, P13, P169, P19, P29, P32, P33, P4, P9	A14, A81, A82, A83, A84, A89, B14, B15, B31, B33, B49, B7, B81, B82, B83, B84, C3, E1, E111, E329, P18

HS Code	EU+UK	China	India	US	Japan	Brazil
39	A22, A31, B31, B32, B33, B42, B7, B82, B83, B84, B85, B851, C4, E1, E125, E32, H11, P162, P163	A14, A15, A19, A31, A33, A49, A64, A82, A83, A84, A851, A852, A853, A86, B19, B21, B22, B31, B2, B33, B42, B49, B6, B7, B81, B82, B83, B84, B851, B852, B853, B859, B89, C1, C9, E1, E121, E32, F69, P13, P14, P15, P161, P162, P163, P169, P19, P31, P33, P39	A15, A31, A33, A42, A53, A64, A82, A83, B19, B21, B31, B32, B42, B7, B81, B82, B83, B84, B859, B89, C4, C9, E1, E11, E32, E329, F61, F65, F9, P12, P13, P14, P15, P162, P163, P19, P3, P31, P33, P4, P9	A82, A89, B21, B31, B32, B33, B42, B6, B7, B82, B83, B85, C9, E1, F69, P32	A11, A22, A31, A41, A63, A64, A85, A851, B31, B33, B41, B42, B49, B7, B82, B85, B859, B89, C4, E1, F61, F65, F69, P19, P33, P4, P9	A81, A852, A89, B14, B31, B4, B6, B7, B8, B81, B83, B9, E1, E231, E622, P19, P31
40	A22, A31, B31, B32, B33, B42, B7, B8, B82, B83, B84, C4, E1, E32, H11	A31, A49, A83, A84, A851, A86, B21, B22, B31, B32, B33, B41, B42, B49, B7, B81, B82, B83, B84, B851, B853, B859, E1, E211, E32, F71, P14, P161, P162, P163, P169, P33, P39, P59	B31, B7, B82, B853, E1, F11, F65, P14, P33, P4, P9	B31, B32, B33, B42, B7, B82, B83, B85, C9, E1, F61, F69, P6	A22, A31, A41, A85, B31, B33, B41, B42, B49, B7, B85, B859, B89, C4, E1, F61, F65, F69, P19, P33, P4, P9	A31, A83, B14, B22, B31, B41, B6, B7, B8, B81, B82, B83, B9, C4, E1, E329, E621, P19, P31
41	A12, A21, A4, A63, A83, A84, A85, B22, B31, E32, E321	A11, A14, A49, A82, A83, A84, A851, A86, B19, B33, B42, B49, B7, B82, B83, B84, B851, B89, C1, C3, C9, E1, E32, F69, F71, P161, P162,	A83, A84, B19, B31, B33, B42, B82, B83, B84, B859, C1, C4, C9, E1, E111, E112, E32, P13, P162, P163, P29, P31, P33, P7, P9	E1, F61, P33, P6, P9	A31, A41, A64, A83, A86, B31, B42, B49, B859, C4, E1, E611, F61, F69, P13, P163, P169, P33, P4, P9	A14, A15, A82, A83, A84, A851, A86, B14, B15, B31, B82, B84, E1, E129, P162, P163, P19, P39, P42, P5

HS Code	EU+UK	China	India	US	Japan	Brazil
		P163, P169, P31, P33, P4, P9				
42	A12, A21, A22, A4, A63, A83, A84, A85, B22, B7, B83, B84, E32, E321	A11, A14, A49, A82, A83, A84, A851, A86, B19, B33, B42, B49, B7, B82, B83, B84, B851, B89, C1, C3, C9, E1, E32, F69, F71, P161, P162, P163, P169, P31, P33, P4, P9	A83, B19, B42, B859, E1, P163, P33, P7, P9	E1, P33	B31, P33	B15, B31, B83, E1, E129, P19
43	A12, A21, A4, A63, A83, A84, A85, B31, B7, B83, B84, E32, E321	A11, A14, A83, A84, A86, B22, B83, B84, B851, B89, C3, E1, F69, P162, P163, P169, P31, P33, P4, P9	A53, A83, A84, B19, B42, B859, E1, E111, P162, P163, P33, P7, P9	B31, B85, E1, P33, P9	A31, A41, A64, A83, A86, P163, P169, P33	A14, A82, A83, A84, B14, B15, B31, B82, B84, E1, E129, P19
44	A15, A19, A22, A83, A84, B31, B32, B7, B83, B84, B851, E129, E32	A31, A84, A86, B21, B22, B31, B32, B49, B7, B81, B82, B83, B84, B851, B853, B89, E1, P14, P162, P169, P39	A14, A33, A5, A51, A53, A64, A8, A83, A84, A89, B19, B42, B859, C3, E1, E111, F65, H29, P13, P14, P15, P163, P31, P33, P7, P9	A31, A32, A51, A53, A59, A64, A69, A84, B31, B42, B82, E1, E32, F61, P33, P6	A22, A41, A85, B31, B33, B41, B49, B7, B85, B859, B89, C4, E1, F65, F69, P19, P33, P4, P9	A14, A15, A82, A83, A84, A851, A9, B14, B31, B82, B84, B89, E1, P162, P163, P19, P39
45	A15, A19, A22, A83, A84, B31, B32, B7, B83, B84, E1	A31, A84, A86, B21, B22, B31, B32, B49, B7, B81, B82, B83, B84, B851, B853, B89, E1, P14, P162, P169, P39	A14, A33, A5, A64, A8, A83, A84, C3, E111, F65	A31, A69, A84, B31, B82, F61, P6	A22, A41, A85, B7	A14, A82, A83, A84, A9, B14, B31, B82, B84, E1, P19

HS Code	EU+UK	China	India	US	Japan	Brazil
46	A22, B31, B32, B83	A84, A86, B83, B84, B89, E1, P162, P169	A14, A33, A5, A64, A8, A83, A84, C3, E111, F65	A31, A69, A84, F61, P6	A41, A83, A86, C3	A14, A82, A83, A84, B14, B31, B82, B84, E1, P19
47	B851, E129, E32	A49, A83, A84, A851, A86, B33, B42, B7, B83, B84, B89, C1, C9, E1, E32, P162, P163, P169, P33	A84, B31, B33, B42, B82, B84, B853, B859, C1, C4, C9, E1, E112, E32, P31, P33, P9	A89, B31, B82, B852, F61, P6	B42, B49, B859, C4, E1, F61, F69, P13, P169, P33, P4, P9	P19
48	A22, A31, B31, B32, B7, B83, B84, B851, E129, E32	A31, A84, A86, B21, B22, B31, B32, B49, B7, B81, B82, B83, B84, B851, B853, B89, C4, E1, H11, P14, P162, P169, P39, P51	A84, E1	A89, B21, B31, B32, B33, B42, B82, B83, B84, B85, B852, C9, E1, F69, P15, P9	A22, A41, A85, B31, B7	A13, A14, A22, A81, A82, A852, A89, B14, B31, B32, B33, B7, B82, B83, B84, E1, E329, P19
49		B22, B31, B7, B81, B83, B851, E1, E121, E321, E329, H19, P14, P163, P169, P33, P39	A53	B7	A31, A82, A85, B21, B22, B31, B33, B41, B49, B7, B85, B859, B89, C4, E1, E122, F65, F69, P19, P33, P4, P9	P19
50	B22, B31, B32, B82	A14, A82, A84, A86, B19, B33, B49, B7, B82, B83, B84, B851, B89, C3, E1, P161, P162, P163, P169, P32, P33, P9	E1, E111, F69, P14, P33, P4	B31, B32, B33, B42, B6, B7, B83, B85, C9, E1, F61, F69, P33, P6, P9	B31, B42, B49, C4, E1, E611, F61, P33, P4, P9	A14, A83, A84, B31, P19

HS Code	EU+UK	China	India	US	Japan	Brazil
61	B22, B31, B32, B42, B7, B82, B83, B84, E1, E32, H11	A14, A83, A84, A86, B7, B83, B84, B851, B89, C3, E1, F69, P162, P163, P169, P31, P32, P33, P4, P9	A53, B19, B31, B42, B859, E1, E111, E32, P163, P22, P29, P31, P33, P7, P9	B22, B31, B6, B7, B82, B85, E1, P33	B31, P33	B14, B31, B81, B83, E1, P19
62	B22, B31, B32, B42, B7, B82, B83, B84, E1, E32, H11	A11, A14, A83, A84, A86, B7, B83, B84, B851, B89, C3, E1, F69, P162, P163, P169, P31, P32, P33, P39, P4, P9	B19, B31, B42, B859, E1, E32, P163, P33, P7, P9	B22, B31, B6, B7, B82, B85, E1, P33	B31, P33	B31, B83, E1, P19
63	A22, B22, B31, B32, B7, B8, B82, B83, B84, B851, E32	A14, A31, A49, A83, A84, A851, A86, B21, B22, B31, B32, B42, B49, B7, B81, B82, B83, B84, B851, B853, B89, C1, C3, C4, C9, E1, E32, F69, P14, P162, P163, P169, P31, P32, P33, P39, P4, P9	B19, B42, B859, E1, P163, P33, P7, P9	A89, B31, B32, B33, B42, B6, B7, B82, B83, B84, B85, B852, B89, C9, E1, F69, P33	A22, A41, A85, B31, B42, B49, B7, C4, E1, F61, P33, P4, P9	B31, B83, E1, P19
64	B22, B31, B7, B83, B84, E32	A11, A14, A83, A84, A86, B22, B31, B7, B83, B84, B851, B89, C3, E1, F69, P162, P163, P169, P31, P33, P39, P4, P9	B19, B42, B859, E1, P163, P33, P7, P9	E1, P33	E611, P33	B31, B83, E1, P19

HS Code	EU+UK	China	India	US	Japan	Brazil
65	B22, B31, B32, B7, B82, B83, B84, E32	A11, A14, B31, B7, B83, B84, B851, B89, C3, E1, F69, P162, P163, P169, P31, P32, P33, P4, P9	B19, B42, B859, E1, P33, P7, P9	B7, E1, P33	P33	B15, B31, B8, B83, B89, E1, E129, P19
66	B22, B31, B32, B7, B82, B83, B84, E32	A14, B7, B83, B84, B851, B89, C3, E1, F69, P162, P163, P169, P31, P32, P33, P4, P9	B19, B42, B859, E1, P33, P7, P9	B31, B6, B7, B85, E1, P33	B31, P33	P19
67	B22, B31, B32, B82	A11, A14, A83, A84, A86, B7, B83, B84, B851, B89, C3, E1, F69, P162, P163, P169, P31, P32, P33, P39, P4, P9	B19, B42, B859, E1, P33, P7, P9	E1, P33	A11, P33	E1, P19
68	B7, B8, B83, B84, E1	A49, A83, A84, A851, A86, B22, B31, B32, B33, B41, B42, B7, B81, B83, B84, B851, B852, B89, C1, C4, C9, E1, E121, E32, P161, P162, P163, P169, P33, P39, P59	B31, B33, B42, B82B84, B859, C1, C4, C9, E1, E112, E32, F1, 9, P33, P9	B31, B82	B31, B32, B33, B42, B49, B7, B859, E1, E32, F69, P13, P169, P33, P4	B83, P19
69	A22, B22, B31, B32, B7, B83	A31, A84, A86, B21, B22, B31, B32, B33, B41, B42, B49, B7, B81, B82, B83, B84, B851, B853, B859, B89, E1, E121, I9,		B31, B7, B82, B83	A22, A41, A85, B7, P33	A89, B7, B8, B83, P19

HS Code	EU+UK	China	India	US	Japan	Brazil
		P14, P162, P169, P33, P39, P6				
70	A22, A31, B22, B31, B32, B7, B83	A31, A84, A86, B21, B22, B31, B32, B33, B41, B42, B49, B7, B81, B82, B83, B84, B851, B853, B89, C3, E1, E121, E32, F61, F69, P14, P162, P163, P169, P33, P39	B31, B33, B42, B82, B84, B859, C1, C4, C9, E1, E112, E32, P33, P7, P9	B31, B82, P33, P9	A22, A41, A85, B41, B42, B49, B7, B859, C4, E1, F61, F69, P13, P169, P33, P4, P9	A13, A14, A82, A89, B14, B31, B32, B33, B7, B82, B83, E1, E329, P19
71	A22, A31, B22, B31, B32, B33, B7, B83, B84, B85, E1, E125, E32	A14, A49, A83, A84, A851, A86, B22, B31, B42, B6, B7, B81, B83, B84, B851, B89, C1, C3, C4, C9, E1, E111, E119, E32, F69, F71, G32, H11, H19, P14, P162, P163, P169, P19, P31, P32, P33, P39, P4, P51, P59, P9	B19, B31, B33, B42, B82, B83, B84, B851, B853, B859, C1, C4, C9, E1, E112, E32, G9, P163, P29, P31, P33, P4, P7, P9	B31, B85, E1, P33	B42, B49, B83, B859, C4, E1, E122, F61, F69, P13, P169, P33, P4, P9	B15, E1, E111, P19
72	B31, B33, B7, B83, B84, B85, C4, E1, E125, E32	A49, A83, A84, A851, A86, B19, B33, B41, B42, B7, B83, B84, B851, B852, B853, B89, B9, C1, C4, C9, E1, E32, F61, I9, P162, P163, P169, P19, P32, P33, P39, P59, P6	B22, B31, B33, B41, B7, B82, B83, B84, B853, E1	B31, B32, B33, B42, B83, B852, C9, E1, F69	B49, C4, E1, F61, P33, P4, P9	B83, B89, E231, E611, P19

HS Code	EU+UK	China	India	US	Japan	Brazil
73	A22, A31, B31, B32, B33, B7, B8, B82, B83, B84, C4, E32	A84, A86, B22, B31, B32, B33, B42, B7, B81, B82, B83, B84, B859, B89, E1, E32, I9, P162, P163, P9	B21, C1, P163	B31, B7, B82, B83, B85	B31, B7, B82, B859, E1, P33	A89, B22, B31, B7, B82, B83, B89, B9, E231, P19
74	A22, A31, B31, B32, B33, B7, B82, B83, B84, B85, E1, E125, E32	A31, A84, A86, B21, B22, B31, B32, B33, B41, B42, B49, B6, B7, B81, B82, B83, B84, B851, B853, B89, C1, C9, E1, F71, G11, P14, P162, P169, P39	B83, B853, C3, E1, E32, P163, P29, P31	B31, B7, B82, B84, B85	A22, A41, A85, B49, B7, C4, E1, F61, P33, P4, P9	B22, B31, B7, E1, P19
75	A22, B31, B32, B83, B7, B82, B83, B84, B85, E1, E125, E32	A49, A83, A84, A851, A86, B19, B31, B41, B42, B7, B83, B84, B851, B852, B853, B89, B9, C1, C4, C9, E1, E32, F61, P162, P169, P32, P33	B853, E1, P33, P7, P9	B31, B7, B82, B85	B49, C4, E1, F61, P33, P4, P9	E1, E129, P19
76	A22, A31, B31, B32, B33, B7, B82, B83, B84, B85, C4, E1, E125, E32	A31, A84, A86, B21, B22, B31, B32, B33, B41, B42, B49, B6, B7, B81, B82, B83, B84, B851, B853, B859, B89, C1, C9, E1, P14, P161, P162, P163, P169, P33, P39, P59	B83, B853, E1, E32, P163, P29, P31	B31, B32, B33, B42, B7, B82, B84, B83, B85, B852, C9, E1, F69,	A22, A41, A85, B31, B42, B49, B7, C4, E1, F61, P33, P4, P9	A89, B22, B7, B82, B83, B9, E1, P19

HS Code	EU+UK	China	India	US	Japan	Brazil
78	A22, B31, B32, B33, B42, B7, B83, B84, B85, E1, E125, E32, H11	A49, A83, A851, B31, B41, B42, B6, B7, B83, B84, B851, B89, C1, C4, C9, E1, E32, P162, P163, P169, P33	B31, B33, B42, B82, B83, B84, B853, B859, C1, C4, C9, E1, E112, E32, P163, P29, P31, P33, P9	B31, B32, B33, B42, B83, B85, C9, E1, F69	B42, B49, B859, C4, E1, F61, F69, P13, P169, P33, P4, P9	E329, P19
79	B31, B32, B33, B42, B82, B83, B85, B852, C9, E1, F69	A49, A83, A84, A851, A86, B19, B31, B42, B6, B7, B83, B84, B851, B852, B853, B89, B9, C1, C4, C9, E1, E32, F61, P162, P169	B853, E1	B31, B32, B33, B42, B82, B83, B85, B852, C9, E1, F69	B42, B49, C4, E1, F61, P33, P4, P9	B22, E1, E129, P19
80	B31, B33, B7, B83, B84, B85, E1, E125, E32	A49, A83, A84, A851, A86, B19, B42, B7, B83, B84, B851, B852, B853, B89, C1, C4, C9, E1, E32, F61, P14, P162, P163, P169, P19, P32, P33, P39, P9	B853, E1		B49, C4, E1, F61, P33, P4, P9	E1, E129, P19
81	A22, B31, B32, B33, B7, B83, B84, B85, E1, E125, E32	A49, A83, A84, A851, A86, B19, B31, B32, B33, B41, B42, B6, B7, B83, B84, B851, B852, B853, B89, B9, C1, C4, C9, E1, E32, F61, P14, P161, P162, P163, P169, P32, P33, P39, P51, P59, P9	B31, B33, B42, B82, B83, B84, B853, B859, C1, C4, C9, E1, E112, E32, F65, P163, P29, P31, P33, P4, P7, P9	B31, B32, B33, B42, B82, B83, B85, C9, E1, F69	B31, B32, B33, B42, B49, B859, C4, F61, F69, P13, P169, P33, P4, P9	E1, E129, E329, P19

HS Code	EU+UK	China	India	US	Japan	Brazil
82	A22, A31, B31, B7, B83	A14, A31, A84, A86, B21, B22, B31, B32, B33, B49, B7, B81, B82, B83, B84, B851, B853, B859, B89, C3, E1, F69, P14, P162, P163, P169, P31, P33, P39, P4, P9	B19, B42, B859, E1, P33, P7, P9	E1, P33	A22, A41, A85, B42, B7, P33	A83, B14, B22, B31, B83, C4, E1, E111, E329, E611, E621, P19, P31
83	A22, B22, B31, B32, B7, B82, B83	A31, B21, B22, B31, B32, B33, B41, B42, B49, B7, B81, B82, B83, B84, B851, B853, E1, E121, P14, P162, P169, P33, P39		B31, B32, B33, B42, B82, B83, C9, E1, F69	A22, A41, A85, B7, P33	P19
84	A22, A31, B22, B31, B32, B33, B41, B42, B49, B7, B8, B82, B83, B84, B853, C4, E1, E32, H11	A84, A86, B22, B31, B32, B33, B41, B42, B7, B81, B82, B83, B84, B859, B89, C1, C3, C4, E1, E111, E112, E211, E32, G9, H11, I2, I9, P14, P161P162, P163, P169, P33, P39, P51, P59	B31, B33, B42, B49, B6, B7, B82, B83, B84, B853, B859, C1, C4, C9, E1, E112, E32, P13, P163, P22, P29, P31, P33, P7, P9	B22, B31, B32, B41, B7, B82, B83, B84, B85, B859, B89, B9, F65, F69, P15, P163, P169, P32, P43, P9	B31, B41, B42, B49, B7, B81, B82, B83, B84, B85, B852, B853, B859, B89, C4, E1, F65, F69, P13, P169, P19, P33, P4, P9	A13, A14, A42, A59, A82, A83, A84, B14, B22, B31, B32, B33, B41, B7, B8, B81, B82, B83, B84, B89, B9, C4, E1, E111, E329, E6, E611, E621, F61, P19, P31
85	A22, A31, B22, B31, B33, B41, B42, B49, B7, B8, B82, B83, B84, B853, C4, E1, E32, H11	A84, A86, B22, B31, B32, B33, B41, B42, B7, B81, B82, B83, B84, B89, C1, C4, E1, E111, E112, E211, E32, F71, I9, P161P162, P163,	B31, B33, B42, B49, B6, B7, B81, B82, B83, B84, B859, C1, C4, C9, E1, E112, E32, P163, P29, P31, P33, P7, P9	B31, B32, B33, B41, B7, B82, B83, B84, B85, B852, B853, B89, B9, F65, P33	B31, B41, B42, B49, B7, B82, B83, B85, B852, B853, B859, B89, C4, E1, F65, F69, P13, P169, P19, P33, P4, P9	A42, A83, B14, B15, B21, B22, B31, B33, B7, B8, B81, B82, B83, B84, B89, B9, C4, E1, E111, E211,

HS Code	EU+UK	China	India	US	Japan	Brazil
		P169, P33, P39, P59, P6				E329, E611, E621, P19, P31
86	B31, B42, B7, B8, B83, B84, E1, E32, H11	A84, A86, B22, B7, B83, B84, B89, C4, E1, E111, E211, E32, P14, P162, P163, P169, P33	B31, B33, B42, B82, B84, B859, C1, C4, C9, E1, E112, E32, P33, P9	B31, B32, B41, B7, B82, B83, B84, B85, F69	B42, B7, B859, E1, F69, P13, P169, P33, P4	B83, B89, P19
87	B31, B33, B42, B7, B82, B83, B84, B851, C4, E1, E32, H11	A84, A86, B22, B31, B42, B7, B81, B82, B83, B84, B89, C3, C4, E1, E111, E211, E32, F71, I9, P14, P161, P162, P163, P169, P31, P33, P59	B31, B33, B42, B7, B82, B83, B84, B859, C1, C3, C4, C9, E1, E112, E32, P33, P9	B21, B31, B32, B33, B41, B42, B7, B82, B83, B85, B859, B89, C9, E1, F69, P32	B31, B42, B7, B859, E1, F69, F73, P13, P169, P33, P4	A13, A14, A15, A82, A83, A84, A851, B14, B31, B32, B33, B41, B6, B7, B8, B81, B82, B83, B84, B89, B9, C4, E1, E111, E329, E611, E621, P162, P163, P19, P31, P39
88	B31, B7, B83, E32	B7, C4, E1, E111, E211, E32, F71, P15, P162, P163, P169, P31, P33, P39	E1	B31, B32, B33, B42, B7, B81, B82, B83, B84, B859, C9, E1, F69, P15, P163	B7, B83, E1	A13, A14, A82, B14, B31, B32, B33, B7, B82, B83, B84, E1, E111, E329, P19
89	B31, B7, B8, B83, E32	A84, A86, B22, B42, B7, B82, B83, B84, B89, C1, C4, C9, E1, E111, E112, E211, E32, F71, P14, P162, P163, P169, P31, P33, P59	E1	B31, B32, B33, B42, B7, B82, B83, B84, B89, C9, E1, F69	B22, B7, E1, P33	E112, P19

HS Code	EU+UK	China	India	US	Japan	Brazil
90	B22, B31, B33, B42, B49, B7, B8, B82, B83, B84, B853, C4, E1, E32, H11	A84, A86, B3132, B33, B41, B42, B7, B81, B82, B83, B84, B89, C3, C4, E1, E32, F61, F69, P161, P162, P163, P169, P33, P39, P59	B22, B31, B33, B41, B42, B7, B82, B84, B853, B859, C1, C3, C4, E1, E112, E32, F61, F65, P15, P163, P33, P7, P9	B19, B22, B31, B32, B33, B41, B42, B7, B8, B82, B83, B84, B85, B851, B852, B853, B859, B89, B9, E1, F65, P169, P33, P9	B31, B41, B42, B49, B7, B82, B83, B85, B852, B853, B859, B89, C4, E1, F65, F69, P13, P169, P19, P29, P33, P4, P9	A13, A14, A31, A82, A83, B14, B31, B32, B33, B41, B49, B7, B81, B82, B83, B84, B9, C4, E1, E111, E329, E611, E621, F61, P19, P31
91	B22, B31, B49, B7, B8, B82, B83, B84, B853, E1, E32	A14, B31, B7, B83, B84, B851, B89, C3, E1, E111, E119, E32, F69, G32, P162, P163, P169, P31, P33, P4, P9	B19, B31, B33, B42, B6, B7, B82, B83, B84, B859, C1, C4, C9, E1, E112, E32, P33, P4, P7, P9	B31, B32, B7, B82, B83, B9, E1, P33	B42, B7, B859, E1, F69, P13, P169, P33, P4	B7, B81, B82, P19
92	B22, B31, B49, B7, B8, B82, B83, B84, B853, E1	A14, B7, B83, B84, B851, B89, C3, E1, F69, P162, P163, P169, P31, P33, P4, P59, P9	B19, B31, B33, B42, B7, B82, B83, B84, B859, C1, C4, C9, E1, E112, E32, P163, P33, P7, P9	E1, P33	B42, B859, E1, F69, P13, P169, P33, P4	
93	B31, B83, B851, E32	A14, B31, B33, B42, B7, B83, B84, B851, B89, C3, E1, E32, F69, P162, P163, P169, P31, P33, P4, P59, P9	B19, B32, B42, B81, B83, B859, C4, E1, E11, F61, F65, P15, P163, P33, P4, P7, P9	B19, B31, B42, B7, B82, B84, B853, B89, E1, F65, F72, F79, P32, P33	B42, B49, B7, B82, B859, C4, E1, P33	B14, B81, E1, E329
94	A15, A19, A83, A84, B22, B31, B32, B33, B49, B7, B8, B82, B83, B84, B851, B853, C4, E1, E129, E32	A84, A86, B22, B31, B33, B42, B7, B81, B82, B83, B84, B89, E1, E32, P162, P163, P169, P32, P33, P9	B31, B33, B42, B7, B82, B83, B84, B859, C1, C4, C9, E1, E112, E32, P163, P33, P9	B21, B22, B31, B6, B7, B82, B85	B31, B33, B41, B42, B49, B7, B85, B859, C1, C4, C9, E1, E112, E32, P163, P33, P9	A14, A82, A84, B14, B21, B31, B82, B84, E1, E329

HS Code	EU+UK	China	India	US	Japan	Brazil
95	A12, A21, A22, A64, A83, A84, B22, B31, B49, B7, B8, B82, B83, B84, B853, E1, E32	A14, A84, A86, B21, B22, B31, B7, B82, B83, B84, B851, B89, C3, C4, E1, E111, E211, E32, F69, F71, P161, P162, P163, P169, P31, P33, P4, P9	A14, B19, B31, B33, B42, B7, B82, B83, B84, C1, C4, C9, E1, E112, E32, P33, P7, P9	B21, B22, B31, B41, B7, B82, B84, B852, B89, E1, F65, P33	A31, A82, A85, B21, B22, B31, B32, B33, B41, B42, B49, B7, B85, B859, E1, F69, P13, P19, P33, P4, P9	A13, A14, A83, A84, B14, B31, B41, B7, B8, B81, B83, B9, C4, E1, E111, E329, E611, E621, P31
96	A22, A31, B22, B31, B49, B7, B82, B83, B84, B853, E1, E32	A11, A14, A83, A86, B22, B31, B41, B7, B83, B84, B851, B89, C3, E1, E32, F69, H22, P15, P162, P163, P169, P31, P32, P33, P4, P9	B19, B31, B33, B42, B82, B84, B859, C1, C4, C9, E1, E112, E32, P163, P33, P7, P9	B31, B32, B33, B42, B7, B82, B83, B85, B853, C9, E1, F61, F69, P33, P6	B31, B33, B41, B42, B49, B7, B85, B859, B89, C4, E1, F65, F69, P13, P19, P33, P4, P9	A13, A14, A82, A83, A84, , B14, B31, B32, B33, B7, B81, B82, B83, B84, E1, E111, E329
97	A12, A21, A4, A63, A83, A84, A85, B31, B32, E32	A14, A83, A84, A86, B83, B84, B851, B89, C3, E1, E121, E321, E329, F69, P162, P163, P169, P31, P33, P39, P4, P9	B19, B42, B859, E1, P163, P33, P7, P9	A14, A33, E1, E129, P33	P33	P19

Source: Author's compilation from UNCTAD TRAINS

3. Country-wise comprehensive flow chart of the general export procedure from Bangladesh to the selected destinations

This section of the study presents a flow chart of the general export procedure that an exporter from Bangladesh needs to follow to export to the selected destinations. The general export procedure is more or less common in all the selected destinations, with a slight difference in requirements.

In general, the first procedure to export from Bangladesh is to have a trade license. The trade license is issued by the City Corporation/ Union Parishad/ Municipal Corporations. The exporter needs to become a member of a business association. For instance, RMG exporters have to become associated with BGMEA/BKMEA. Depending on the type of product an exporter produces, the business association membership will vary. After that, the exporters need to get an Export Registration Certificate (ERC), from the Chief Controller of Imports and Exports (CCI&E). An Import Registration Certificate (IRC) is also required if the production of the exporting item requires the import of raw materials (also issued by CCI&E).

Once the exporter finds a suitable buyer, price, quotations, and orders are agreed upon, he/she starts the customs and related procedure to export that item. Among the export procedures and required documents¹³,

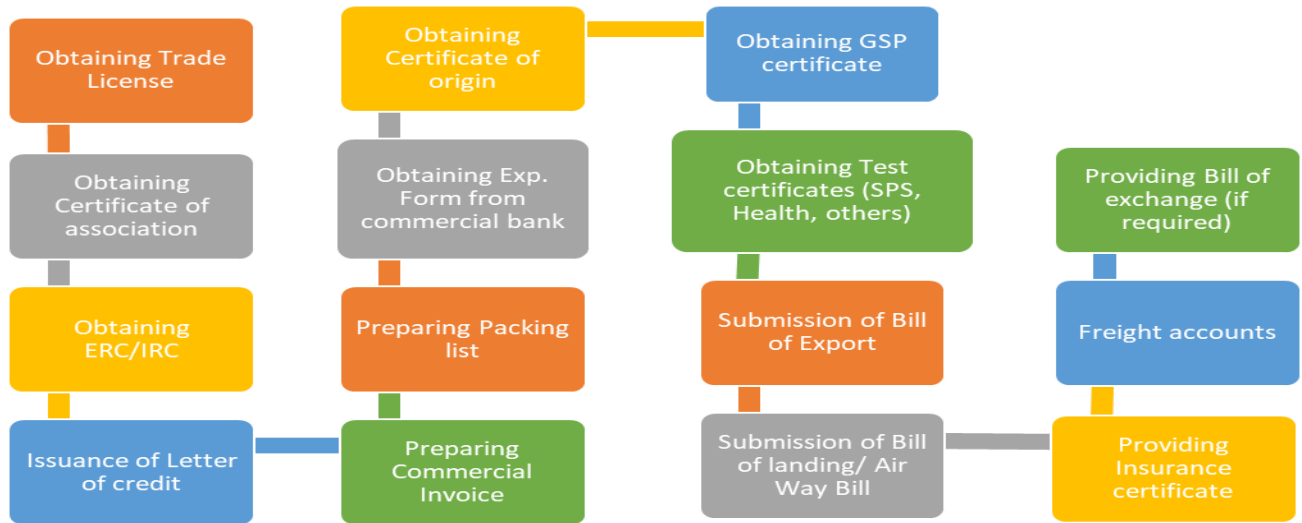
- Letter of credit (LC)
- Commercial invoice
- Packing list
- Exp. Form from commercial banks
- Country of origin certificate
- GSP/SAFTA/APTA certificate
- Test certificates (SPS, health, physical, chemical, radiation, etc. depending on the product)
- Bill of export
- Landing /Air Way Bill
- Insurance certificates (country/buyer-specific requirement)
- Bill of exchange (if required)

are significant. It is to be noted, the procedures presented in the next consecutive pages are general and very basic. Product and buyer-specific export requirements might vary.

¹³ Export Promotion Bureau (EPB). - - [Export Promotion Bureau-Government of the People\'s Republic of Bangladesh \(portal.gov.bd\)](http://portal.gov.bd)

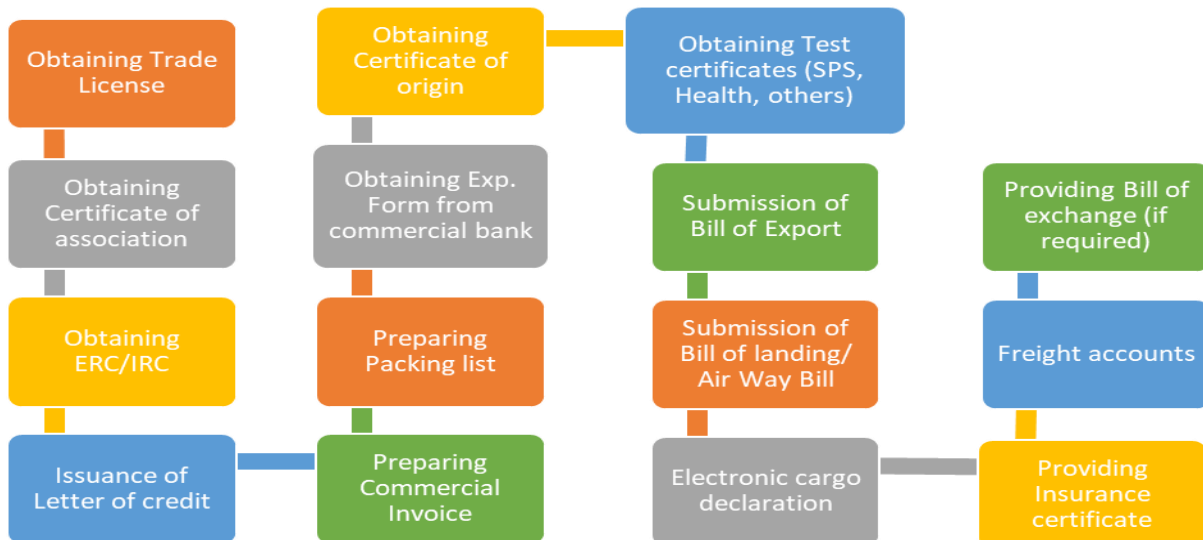
Export procedures and requirements to export goods to Japan¹⁴

Figure 3: Flow chart of export procedures for exporting to Japan



Export procedures and requirements to export goods to the USA¹⁵

Figure 4: Flow chart of export procedures for exporting to the USA

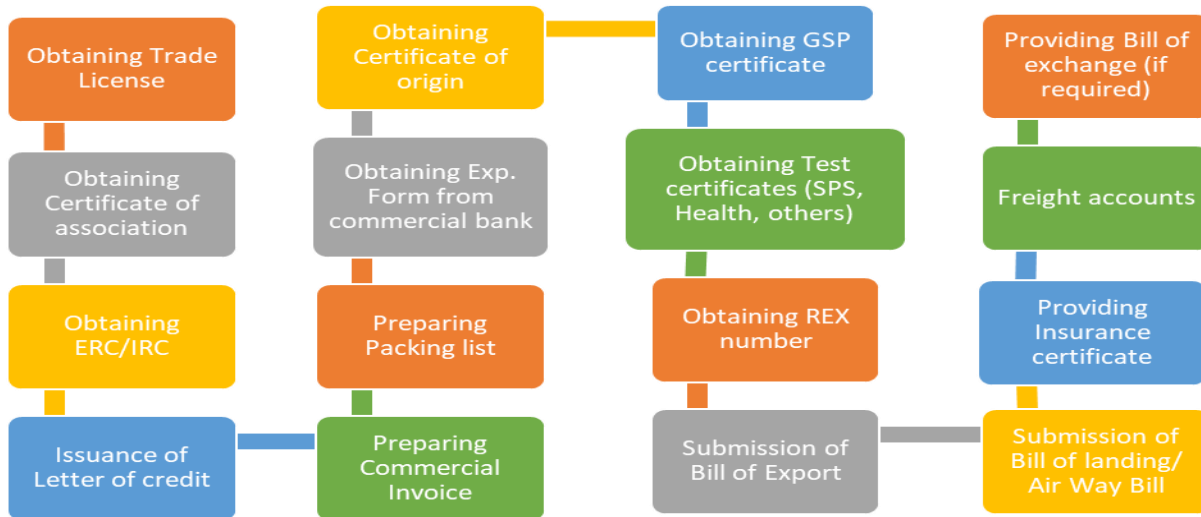


¹⁴ [Import Procedures : Japan Customs](#)

¹⁵ [Introduction to the CBP Import Process | U.S. Customs and Border Protection](#)

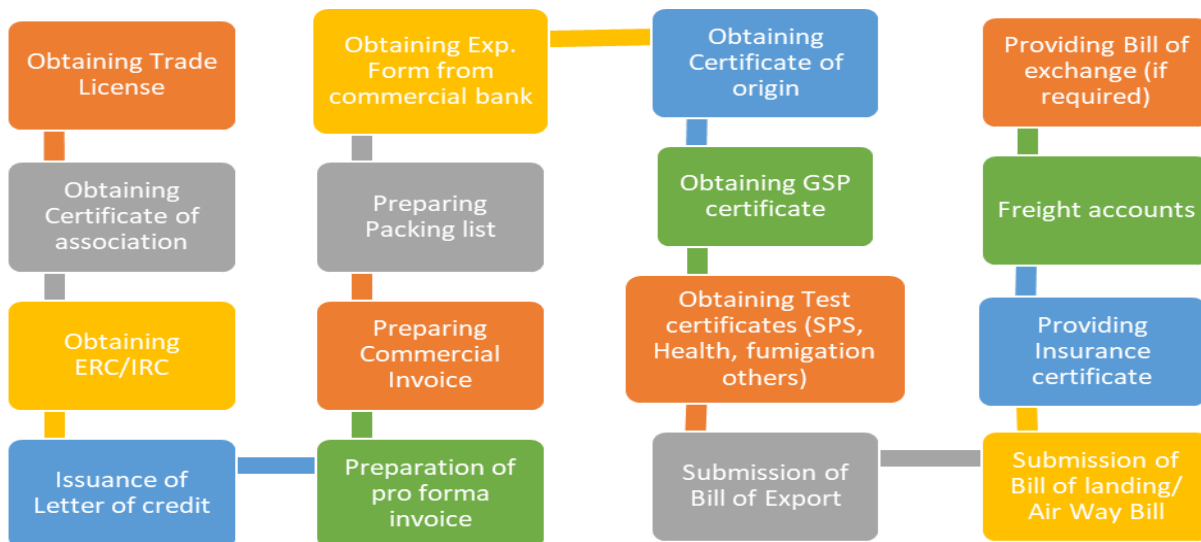
Export procedures and requirements to export goods to the UK

Figure 5: Flow chart of export procedures for exporting to the UK



Export procedures and requirements to export goods to China¹⁶

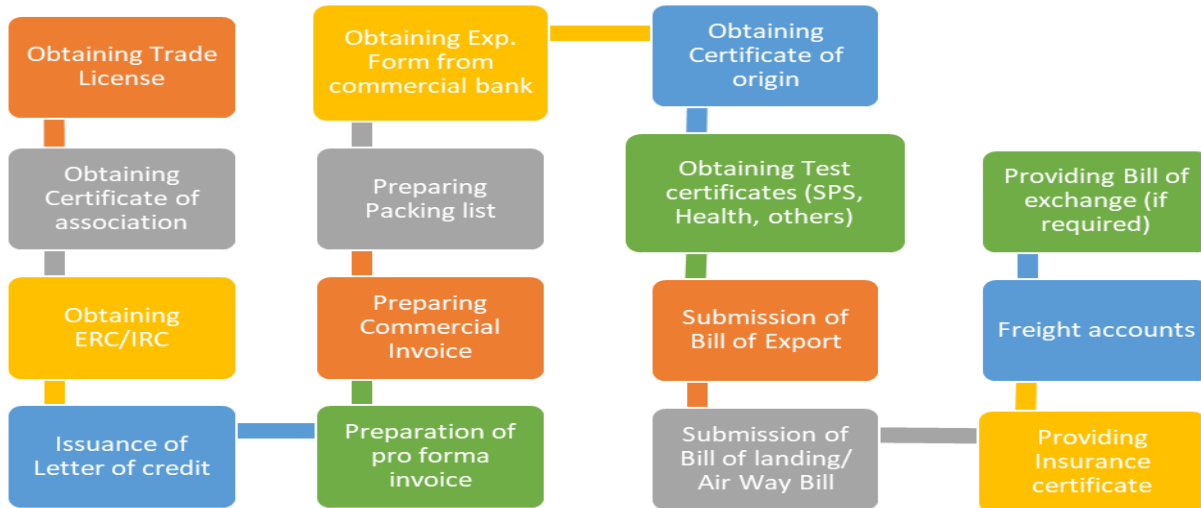
Figure 6: Flow chart of export procedures for exporting to China



¹⁶ [Import from China - list of most important documents \(examinechina.com\)](http://importfromchina.com)

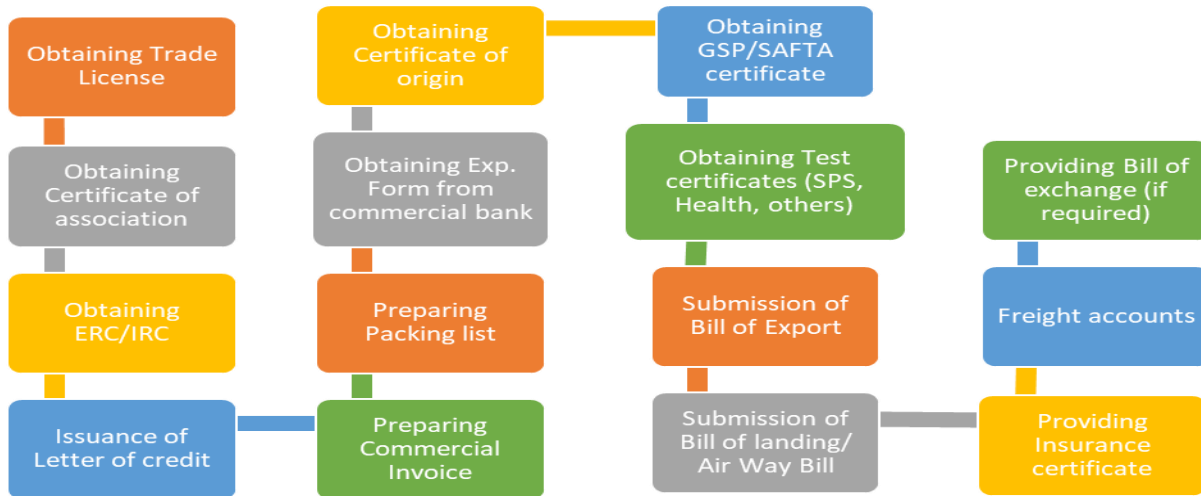
Export procedures and requirements to export goods to Brazil¹⁷

Figure 7: Flow chart of export procedures for exporting to Brazil



Export procedures and requirements to export goods to India¹⁸

Figure 8: Flow chart of export procedures for exporting to India

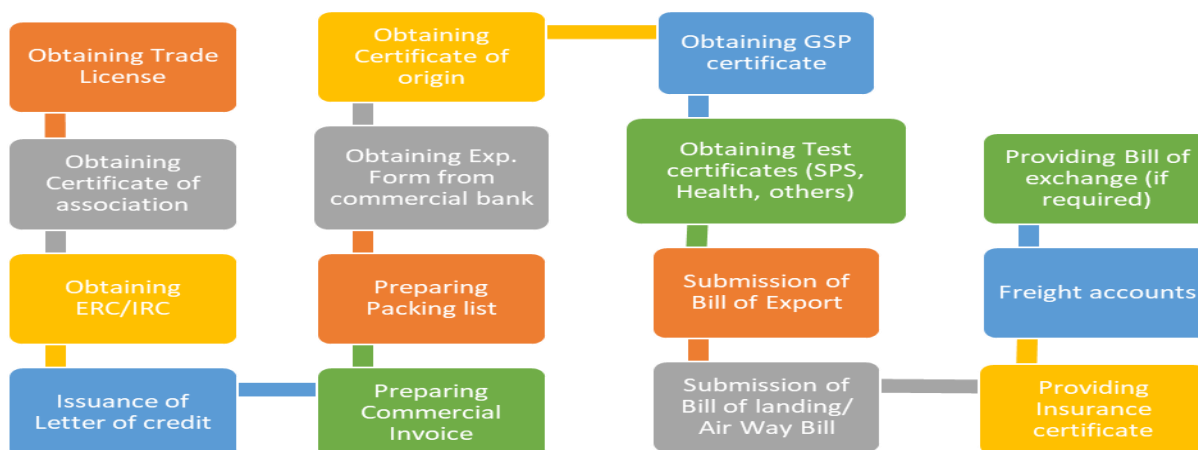


¹⁷ [TTBGov - International Affairs Resources for Brazil](#)

¹⁸ [Import and Export Procedures in India - India Briefing News \(india-briefing.com\)](#)

Export procedures and requirements to export goods to the EU (Spain, Germany, France, Italy)

Figure 9: Flow chart of export procedures for exporting to the EU (Germany, Spain, Italy, France)



4. Market demand analysis for diversified Bangladeshi products having export potentials

4.1 Export potential of current exporting items

In this section of the study, the growth potential of current exporting commodities in the selected destinations is presented. The tables that are presented here are based on the projections of ITC export potential maps. An important thing to be noted here, the value of the export potential is calculated as a weighted average of the last five years' direct and mirror data, and it is a projection of what the value might be in 2025.

For instance, the export potential of the product '*a*' supplied by country '*b*' to the destination '*c*,' in monetary terms is calculated as supply × demand (corrected for market access) × bilateral ease of trade. The supply and demand values are projected in the future aligning with population and GDP forecasts, forward-looking tariffs, and demand elasticities. The export potential value in this section is an estimated value and might differ from the actual value of the commodity demanded in 2025 for that particular destination¹⁹. The value of actual exports represented in the following tables is an arithmetic average of the last five years reported and mirror data of reliable reporters.

¹⁹ Explanations from the FAQ and glossary of ITC export potential map. [Export Potential Map \(intracen.org\)](https://www.intracen.org/)

Table 10 shows the export potential of Bangladesh’s current exporting items to Brazil. The products mostly include RMG (kint and woven) items.

Table 10: The export potential of Bangladesh’s current export commodities to Brazil (top ten items)

Hs Code	Export Potential (Million USD)	Actual Exports from Bangladesh (Million USD)	Untapped ²⁰ Potential	Applied tariff by Brazil (%)	Brazil's Import from World (Million USD)	Bangladesh's Export to the World (Million USD)
620342	26.0	18.3	7.7	35.0	53.4	5500.0
610910	23.0	13.0	10.1	35.0	67.8	5600.0
620520	19.9	18.8	1.1	35.0	50.8	1800.0
620462	17.5	7.6	9.9	35.0	52.2	3400.0
611030	14.8	19.3	.	35.0	86.5	2300.0
611020	9.9	12.7	.	35.0	40.4	2700.0
620343	9.2	4.0	5.2	35.0	45.5	676.3
610510	7.5	5.8	2.0	35.0	31.4	938.3
611120	6.5	1.9	4.5	35.0	24.8	858.5
610990	5.8	1.8	4.1	35.0	47.7	780.7

Source: Authors’ compilation from ITC Export Potential Map

Table 11 shows the export potential of Bangladesh’s current exporting items to China. The products mostly include RMG (kint and woven), fish, footwear, and textile fibre.

Table 11: The export potential of Bangladesh’s current export commodities to China (top ten items)

Hs Code	Export Potential (Million USD)	Actual Exports from Bangladesh (Million USD)	Untapped Potential	Applied tariff by China (%)	China's Import from World (Million USD)	Bangladesh's Export to the World (Million USD)
610910	366.3	91.9	274.4	0.0	505.0	5600.0
620342	230.2	87.4	142.8	0.0	270.6	5500.0
611020	165.1	28.5	136.6	0.0	357.2	2700.0

²⁰ According to ITC, “the Export Potential Map model predicts the expected value of trade between two countries taking into account supply performance, demand for the selected product, and the relative strength of the trade relationship between the exporting and importing country. It generates a benchmark value of what can be reasonably expected given the characteristics of the trading countries and specific product based on historical trade and market access information projected into the future. While the model provides important guidance on export potential, it does not represent an upper boundary for export performance.

Exporters can exceed the expected values through exceptional performance in some markets such as creating high quality products with strong brand recognition that align well with consumer preferences. Exceeding the export potential in some markets can have two possible meanings: (1) other markets that also import the product and with whom trade is in principle possible have been so far neglected and (2) other suppliers exist with unused export potential in these markets; should they manage to overcome current frictions, competition could become fiercer. Thus, the export potential value is an indicative benchmark of an “optimal” allocation of trade flows, but not an absolute limit on possible export values.” [Export Potential Map \(intracen.org\)](http://intracen.org)

Hs Code	Export Potential (Million USD)	Actual Exports from Bangladesh (Million USD)	Untapped Potential	Applied tariff by China (%)	China's Import from World (Million USD)	Bangladesh's Export to the World (Million USD)
620462	122.0	49.9	72.2	0.0	167.2	3400.0
530710	110.5	75.0	35.5	0.0	75.0	397.1
0306Xb	91.4	2.3	89.1	0.0	2900.0	382.3
620520	87.8	24.9	62.8	0.0	153.1	1800.0
611030	84.8	20.8	63.9	0.0	168.7	2300.0
6403XX	78.6	22.2	56.4	0.0	1300.0	614.6
620193	66.1	23.3	42.9	0.0	278.4	528.3

Source: Authors' compilation from ITC Export Potential Map

Table 12 shows the export potential of Bangladesh's current exporting items to France. The products mostly include RMG (kint and woven) items.

Table 12: The export potential of Bangladesh's current export commodities to France (top ten items)

Hs Code	Export Potential (Million USD)	Actual Exports from Bangladesh (Million USD)	Untapped Potential (Million USD)	Applied tariff by France (%)	France's Import from World (Million USD)	Bangladesh's Export to the World (Million USD)
610910	652.2	464.7	187.5	0.0	1600.0	5600.0
630342	592.8	393.2	199.6	0.0	1400.0	5500.0
620462	379.1	243.7	135.4	0.0	1100.0	3400.0
611030	384.4	205.3	143.1	0.0	1300.0	2300.0
611020	352.2	232.0	93.1	0.0	1100.0	2700.0
620520	190.2	89.1	101.1	0.0	496.2	1800.0
610462	166.0	114.9	51.1	0.0	392.4	1200.0
611120	142.8	84.8	57.9	0.0	406.4	858.8
610510	141.9	98.8	43.1	0.0	340.8	938.3
610990	92.7	57.9	34.8	0.0	821.1	780.7

Source: Authors' compilation from ITC Export Potential Map

Table 13 shows the export potential of Bangladesh's current exporting items to Germany. The products mostly include RMG (kint and woven) items.

Table 13: The export potential of Bangladesh's current export commodities to Germany (top ten items)

Hs Code	Export Potential (Million USD)	Actual Exports from Bangladesh (Million USD)	Untapped Potential (Million USD)	Applied tariff by Germany(%)	Germany's Import from World (Million USD)	Bangladesh's Export to the World (Million USD)
620342	1500.0	863.2	668.5	0.0	3100.0	5500.0
610910	1400.0	1000.0	379.9	0.0	2900.0	5600.0
611020	728.7	488.9	239.8	0.0	2200.0	2700.0
620462	701.7	367.8	333.9	0.0	1900.0	3400.0
611030	668.3	429.0	239.3	0.0	2200.0	2300.0
620520	440.1	224.6	215.5	0.0	903.0	1800.0
610462	376.9	266.7	110.3	0.0	778.4	1200.0
610510	254.1	174.5	79.6	0.0	523.0	938.3
610990	218.7	142.5	76.2	0.0	1500.0	780.7
620343	192.2	114.7	77.4	0.0	723.5	676.3

Source: Authors' compilation from ITC Export Potential Map

Table 14 shows the export potential of Bangladesh's current exporting items to India. The products mostly include RMG (kint and woven), textile fibre, and vegetable oil.

Table 14: The export potential of Bangladesh's current export commodities to India (top ten items)

Hs Code	Export Potential (Million USD)	Actual Exports from Bangladesh (Million USD)	Untapped Potential (Million USD)	Applied tariff by India (%)	India's Import from World (Million USD)	Bangladesh's Export to the World (Million USD)
620342	159.6	75.1	84.5	0.0	101.9	5500.0
620520	82.2	43.5	38.7	0.0	60.7	1800.0
530310	63.3	42.3	21.0	0.0	42.8	132.8
151590	59.2	53.5	5.6	0.0	59.0	54.3
610910	57.9	20.2	37.7	0.0	40.3	5600.0
620462	50.4	21.2	29.2	0.0	44.6	3400.0
630510	39.6	18.7	20.9	0.0	41.6	61.2
531010	38.6	37.5	1.1	0.0	55.9	74.7
530710	37.4	25.0	12.3	0.0	25.1	397.1
530720	35.9	22.9	13.0	0.0	25.8	172.3

Source: Authors' compilation from ITC Export Potential Map

Table 15 shows the export potential of Bangladesh's current exporting items to Italy. The products mostly include RMG (kint and woven) items.

Table 15: The export potential of Bangladesh's current export commodities to Italy (top ten items)

Hs Code	Export Potential (Million USD)	Actual Exports from Bangladesh (Million USD)	Untapped Potential (Million USD)	Applied tariff by Italy (%)	Italy's Import from World (Million USD)	Bangladesh's Export to the World (Million USD)
610910	394.6	236.4	158.2	0.0	1300.0	5600.0
620342	311.1	187.1	124.1	0.0	968.0	5580.0
611020	210.6	139.3	71.3	0.0	926.1	2700.0
611030	177.7	141.0	36.7	0.0	769.9	2300.0
620462	143.2	85.4	57.8	0.0	593.8	3400.0
620520	130.5	66.2	64.3	0.0	405.1	1800.0
610510	110.1	76.1	34.0	0.0	290.4	938.3
620193	91.4	11.3	80.1	0.0	603.0	528.3
611120	65.4	39.2	26.2	0.0	228.2	858.5
610462	80.9	53.8	27.2	0.0	276.4	1200.0

Source: Authors' compilation from ITC Export Potential Map

Table 16 shows the export potential of Bangladesh's current exporting items to Japan. The products mostly include RMG (kint and woven) items and fish.

Table 16: The export potential of Bangladesh's current export commodities to Japan (top ten items)

Hs Code	Export Potential (Million USD)	Actual Exports from Bangladesh (Million USD)	Untapped Potential (Million USD)	Applied tariff by Japan (%)	japan's Import from World (Million USD)	Bangladesh's Export to the World (Million USD)
610910	356.6	127.2	229.4	0.0	1300.0	5600.0
620342	243.3	153.0	90.3	0.0	742.8	5500.0
611020	136.7	80.4	56.3	0.0	1200.0	2700.0
611030	132.2	126.1	7.1	0.0	2200.0	2300.0
620462	129.0	84.5	44.5	0.0	727.7	3400.0
620520	91.3	39.7	51.6	0.0	471.7	1800.0
610990	53.7	72.5	.	0.0	1200.0	780.7
620343	52.3	22.9	29.3	0.0	738.0	676.3
0306Xb	43.5	18.2	25.3	0.0	1600.0	382.3
620530	40.1	29.5	10.6	0.0	286.9	317.7

Source: Author's compilation from ITC Export Potential Map

Table 17 shows the export potential of Bangladesh's current exporting items to Spain. The products mostly include RMG (kint and woven) items and fish.

Table 17: The export potential of Bangladesh's current export commodities to Spain (top ten items)

Hs Code	Export Potential (Million USD)	Actual Exports from Bangladesh (Million USD)	Untapped Potential (Million USD)	Applied tariff by Spain (%)	Spain's Import from World (Million USD)	Bangladesh's Export to the World (Million USD)
620462	612.8	398.1	214.8	0.0	1300.0	3400.0
620342	561.8	303.9	258.0	0.0	1100.0	5500.0
610910	528.6	505.0	23.6	0.0	1400.0	5600.0
611030	361.1	218.0	143.1	0.0	1100.0	2300.0
611020	252.2	177.7	74.5	0.0	818.8	2700.0
620520	204.1	78.6	125.5	0.0	444.3	1800.0
610462	134.2	93.5	40.7	0.0	294.2	1200.0
610510	117.5	93.6	23.9	0.0	277.3	938.3
611120	114.4	75.2	39.2	0.0	316.8	858.5
0306Xb	90.9	2.8	88.2	0.0	1100.0	382.3

Source: Authors' compilation from ITC Export Potential Map

Table 18 shows the export potential of Bangladesh's current exporting items to the UK. The products mostly include RMG (kint and woven) items.

Table 18: The export potential of Bangladesh's current export commodities to the UK (top ten items)

Hs Code	Export Potential (Million USD)	Actual Exports from Bangladesh (Million USD)	Untapped Potential (Million USD)	Applied tariff by the UK (%)	UK's Import from World (Million USD)	Bangladesh's Export to the World (Million USD)
610910	735.4	467.5	267.9	0.0	1800.0	5600.0
620342	472.2	282.7	189.5	0.0	967.1	5500.0
620462	421.3	304.2	117.0	0.0	995.3	3400.0
611030	367.9	225.3	142.7	0.0	1300.0	2300.0
611020	348.0	185.7	162.3	0.0	1200.0	2700.0
620520	248.7	141.9	106.8	0.0	566.6	1800.0
610462	185.5	150.5	35.0	0.0	430.4	1200.0
611120	163.6	66.2	97.4	0.0	486.5	858.5
610510	135.2	87.7	47.5	0.0	365.5	938.3
620343	107.7	86.5	21.2	0.0	400.1	676.3

Source: Authors' compilation from ITC Export Potential Map

Table 19 shows the export potential of Bangladesh's current exporting items to the USA. The products mostly include RMG (kint and woven) items and footwear.

Table 19: The export potential of Bangladesh's current export commodities to the USA (top ten items)

Hs Code	Export Potential (Million USD)	Actual Exports from Bangladesh (Million USD)	Untapped Potential (Million USD)	Applied tariff by the USA (%)	USA's Import from World (Million USD)	Bangladesh's Export to the World (Million USD)
620342	1300.0	1300.0	.	9.0	4700.0	5500.0
620462	972.8	735.5	237.3	8.3	4400.0	3400.0
611020	761.5	347.6	413.9	11.0	6100.0	2700.0
610910	644.3	221.1	432.2	17.0	4400.0	5600.0
620520	503.1	538.9	.	14.0	2300.0	1800.0
611030	487.8	114.6	373.2	15.0	5600.0	2300.0
610462	269.5	82.2	187.3	13.0	1500.0	1200.0
611120	219.9	88.0	132.0	14.0	1500.0	858.5
610510	181.8	56.7	125.0	20.0	965.7	938.3
6403XX	170.1	91.2	78.9	6.2	7700.0	614.6

Source: Authors' compilation from ITC Export Potential Map

4.2 Potential new exporting commodities from Bangladesh to the selected destinations

In this section, we present ten new items having export potentials, in each of the selected destinations, at a 6-digit HS code, following the ITC Export Potential Map. Bangladesh might try to produce some of the products that are presented in each table, to diversify its export basket. The likelihood of product diversification depends on the supply, demand, and market access conditions. ITC Export Potential Map mentions it as the Product Diversification Indicator (PDI).

ITC has used Product Space Methodology to measure a country's capacity to supply new products. PDI also analyses the supply element by evaluating whether a country possesses suitable land areas, ecological zones, access to the sea, etc. for producing the new products that are identified. PDI also assesses the demand-side effect for these potential new products. It also takes to account, the trade costs (general and specific) of shipping potential goods in the destination country.

Table 20: Potential new items that Bangladesh can export to Brazil

HS code	Brazil's import from the world (Million USD)	Applied tariff of Brazil for Bangladesh (%)
400110	34.0	4.0
854430	319.7	16.0
310530	119.2	0.0
110814	2.4	10.0
3103XX	346.5	6.0
551011	171.5	18.0

HS code	Brazil's import from the world (Million USD)	Applied tariff of Brazil for Bangladesh (%)
071333	90.7	5.0
310559	546.2	0.0
520523	12.3	18.0
130190	3.3	3.6

Source: ITC Export Potential Map

Bangladesh can tap the export potential of natural rubber latex (400110), (Ignition) wiring sets of vehicles (854430), and diammonium hydrogen orthophosphate (310530).

Table 21: Potential new items that Bangladesh can export to China

HS code	China's import from the world (Million USD)	Applied tariff of China for Bangladesh (%)
071410	919.1	0.0
110814	1200	0.0
0306Xc	730.3	0.0
400110	615.5	0.0
100640	299.1	0.0
080132	269.1	0.0
520514	703.5	0.0
854430	456.4	0.0
520523	278.9	0.0
400280	4200	0.0

Source: ITC Export Potential Map

In China, the noteworthy products that Bangladesh can focus on to diversify export are roots and tubers of manioc (071410), manioc starch (110814), and rock lobsters and sea crawfish (0306Xc). The strongest market demand potential in the Chinese market is captured by the mixtures of natural and synthetic rubber/factice, in primary forms (400280) is the product that faces the strongest demand potential in China.

Table 22: Potential new items that Bangladesh can export to France

HS code	France's import from the world (Million USD)	Applied tariff of France for Bangladesh (%)
090111	588.9	0.0
110814	6.4	0.0
071410	8.4	0.0
080132	119.6	0.0
160414	525.9	0.0
854430	1500.0	0.0
100640	50.6	0.0

HS code	France's import from the world (Million USD)	Applied tariff of France for Bangladesh (%)
200820	34.9	0.0
130190	22.0	0.0
310530	157.0	0.0

Source: ITC Export Potential Map

In France, Coffee, not roasted, not decaffeinated (090111), Manioc starch (110814), and roots and tubers of manioc (071410) can be a good option to diversify the export basket.

Table 23: Potential new items that Bangladesh can export to Germany

HS code	Germany's import from the world (Million USD)	Applied tariff of Germany for Bangladesh (%)
090111	2700.0	0.0
080132	417.8	0.0
854430	4700.0	0.0
110814	6.7	0.0
160414	412.0	0.0
200820	76.4	0.0
1212Xb	88.8	0.0
442010	113.1	0.0
400110	26.2	0.0
100640	25.5	0.0

Source: ITC Export Potential Map

Coffee, not roasted, not decaffeinated (090111) faces the strongest demand potential in Germany. Coffee, not roasted, not decaffeinated (090111), cashew nuts, shelled (080132), and (ignition) wiring sets for vehicle (084430) might be some significant products that Bangladesh might consider, to diversify the export basket.

Table 24: Potential new items that Bangladesh can export to India

HS code	India's import from the world (Million USD)	Applied tariff of India for Bangladesh (%)
080131	1200.0	0.0
130190	147.4	0.0
0908Xc	61.5	0.0
310530	1700.0	0.0
0713Xb	285.8	0.0
0907	127.7	0.0
151110	4000.0	0.0
090111	113.5	0.0
110814	5.8	0.0

HS code	India's import from the world (Million USD)	Applied tariff of India for Bangladesh (%)
854430	115.9	0.0

Source: ITC Export Potential Map

In the Indian market, Bangladesh can diversify its export basket by exporting Cashew nuts, in shell (080131), Lac; natural gums (excl gum arabic), resins, balsams, etc. (130190), and Cardamons (0908Xc). Also, crude palm oil (151110) has one of the highest market demand potentials in India.

Table 25: Potential new items that Bangladesh can export to Italy

HS code	Italy's import from the world (Million USD)	Applied tariff of Italy for Bangladesh (%)
090111	1400.0	0.0
160414	700.2	0.0
0307Xd	344.0	0.0
110814	3.7	0.0
080132	70.5	0.0
071333	141.1	0.0
400110	24.6	0.0
200820	17.7	0.0
170310	17.3	0.0
151110	471.8	0.0

Source: ITC Export Potential Map

In the Italian market Bangladesh can diversify its export basket by exporting coffee, not roasted, not decaffeinated (090111), Prepared or preserved tunas (160410), and Octopus, frozen, smoked, frozen, dried, salted, or in brine (0307Xd). Same as Germany, coffee, not roasted, not decaffeinated has the highest market demand potential.

Table 26: Potential new items that Bangladesh can export to Spain

HS code	Spain's import from the world (Million USD)	Applied tariff of Spain for Bangladesh (%)
160414	612.1	0.0
071410	12.9	0.0
090111	546.9	0.0
0307Xd	520.1	0.0
200820	60.6	0.0
080132	73.1	0.0
854430	1700.0	0.0
110814	2600.0	0.0
151110	740.0	0.0

HS code	Spain's import from the world (Million USD)	Applied tariff of Spain for Bangladesh (%)
400110	11.3	0.0

Source: ITC Export Potential Map

In Spain, the market demand potential of prepared or preserved tunas (160414) is the highest. Bangladesh might focus on exporting prepared or preserved tunas (160414), Roots & tubers of manioc (071410), and coffee, not roasted, not decaffeinated (090111) to diversify the export basket.

Table 27: Potential new items that Bangladesh can export to Japan

HS code	Japan's import from the world (Million USD)	Applied tariff of Japan for Bangladesh (%)
854430	4600.0	0.0
0307Xd	308.8	0.0
090111	1100.0	0.0
080132	96.1	0.0
1212Xb	45.1	0.0
160414	344.6	0.0
310530	149.8	0.0
170310	22.5	0.0
230120	264.2	0.0
071410	4.3	0.0

Source: ITC Export Potential Map

Bangladesh can diversify its export to Japan by exporting (Ignition) wiring sets for vehicles (854430), Manioc starch (090111), and Octopus, frozen, smoked, frozen, dried, salted or in brine (0307Xd). (Ignition) wiring sets for vehicles (854430) have the highest market demand potential.

Table 28: Potential new items that Bangladesh can export to the UK

HS code	UK's import from the world (Million USD)	Applied tariff of UK for Bangladesh (%)
080132	177.5	0.0
110814	7.1	0.0
160414	477.9	0.0
854430	1300.0	0.0
090111	466.5	0.0
071410	5.6	0.0
170310	59.9	0.0
100640	40.8	0.0
200820	39.6	0.0

HS code	UK's import from the world (Million USD)	Applied tariff of UK for Bangladesh (%)
8528Xc	2600.0	0.0

Source: ITC Export Potential Map

In the UK, the potential products that Bangladesh can focus on to diversify its export to the UK cashew nuts, shelled (080132), manioc starch (110814), and prepared or preserved tunas (160414). Reception apparatus for television (8528Xc) has the strongest demand potential in the United Kingdom. Bangladesh might also focus on the production and export of reception apparatus for television (8528Xc) to the UK market.

Table 29: Potential new items that Bangladesh can export to the USA

HS code	USA's import from the world (Million USD)	Applied tariff of the USA for Bangladesh (%)
080132	1200.0	0.0
110814	67.5	0.0
090111	4200.0	0.0
854430	10300.0	5.0
160414	1100.0	10.0
200820	326.9	0.25
071410	79.0	9.6
442010	423.3	3.2
310530	341.8	0.0
0307Xd	138.9	0.0

Source: ITC Export Potential Map

In the USA Cashew nuts, shelled (080132), Manioc starch (110814), and Coffee, not roasted, not decaffeinated (090111) might be some potential products that Bangladesh can focus on to diversify the export basket in the USA.

5. Conclusion

This study contributes to gathering and summarising the export-related legal and procedural requirements that an exporter might face while exporting to the selected destinations (Brazil, China, France, Germany, India, Italy, Japan, UK, and the USA). A detailed summary of the tariff preferences, SPS measures, and the NTMs that the exports from Bangladesh might face in the selected destinations are presented in this study. This study also demonstrates a comprehensive flowchart of export procedures from Bangladesh to the selected destinations, which will assist the exporters by easing their understanding of the export requirements.

This study also contributes to analysing the export potentials of the existing export items of Bangladesh to the selected destinations and finding potential new export items that Bangladesh might export to these selected destinations. In a nutshell, this study provides a comprehensive idea to the exporters of Bangladesh wishing to export to the selected destinations, about the overall export procedure, legal requirements, tariffs, NTMs, export potential of existing products, and potential new commodities to export. This study acts as a complementary document of the Bangladesh Trade Portal and contributes to the dissemination of export and trade-related knowledge to the Bangladeshi exporters exporting to the selected export destinations.

Bibliography

European Commission. Countries and Region. Retrieved November 6, 2021, from <https://ec.europa.eu/trade/policy/countries-and-regions/countries/bangladesh/>

No tariff for Bangladesh post-Brexit: UK govt. (2020, November 11). *The Daily Star*. <https://www.thedailystar.net/business/news/no-tariff-bangladesh-post-brexit-uk-govt-1993113>

DATABD.C. (2020). China-Bangladesh Trade: New Prospects Opening Up for Bangladesh. <https://databd.co/stories/china-bangladesh-trade-new-prospects-opening-up-for-bangladesh-13176>

U.S. Embassy in Bangladesh. Bilateral Economic Relations. Retrieved November 5, 2021, from <https://bd.usembassy.gov/our-relationship/policy-history/bilateral-economic-relations/>

ITC Trade Map. (2021). Retrieved November 3, 2021, from <https://www.trademap.org/Index.aspx>

ITC Market Access Map. (2021). Retrieved November 6, 2021, from <https://www.macmap.org/>

ITC Export Potential Map. (2021). Retrieved November 7, 2021, from <https://exportpotential.intracen.org/en/>

Bangladesh Textile Today An Innovation Hub. (2018). Bangladesh-Brazil to Sign FTA for Enhancing Bilateral Trade. <https://www.textiletoday.com.bd/bangladesh-brazil-sign-fta-enhancing-bilateral-trade/>

Export Promotion Bureau (2021). Retrieved November 3, 2021, from - - Export Promotion Bureau-Government of the People%5C's Republic of Bangladesh (portal.gov.bd)

Japan Customs. Retrieved November 5, 2021, from <https://www.customs.go.jp/english/summary/import.htm>

Introduction to the CBP Import Process. Retrieved November 3, 2021, from <https://www.cbp.gov/newsroom/video-gallery/video-library/introduction-cbp-import-process>

Examine China. Resources - Documents for Import from China. Retrieved November 6, 2021, from <https://www.examinechina.com/import-from-china-documents>

TTB Alcohol and Tobacco Tax Trade Bureau. (n.d.). Retrieved November 6, 2021, from <https://www.ttb.gov/itd/international-affairs-resources-for-brazil>

Vasundhara Rastogi. (2021). *India Briefing.* <https://www.india-briefing.com/news/import-export-procedures-india-19125.html/#exportproceduresHeader>

UNCTAD. (2019). *INTERNATIONAL CLASSIFICATION OF NON-TARIFF MEASURES.* https://unctad.org/system/files/official-document/ditctab2019d5_en.pdf